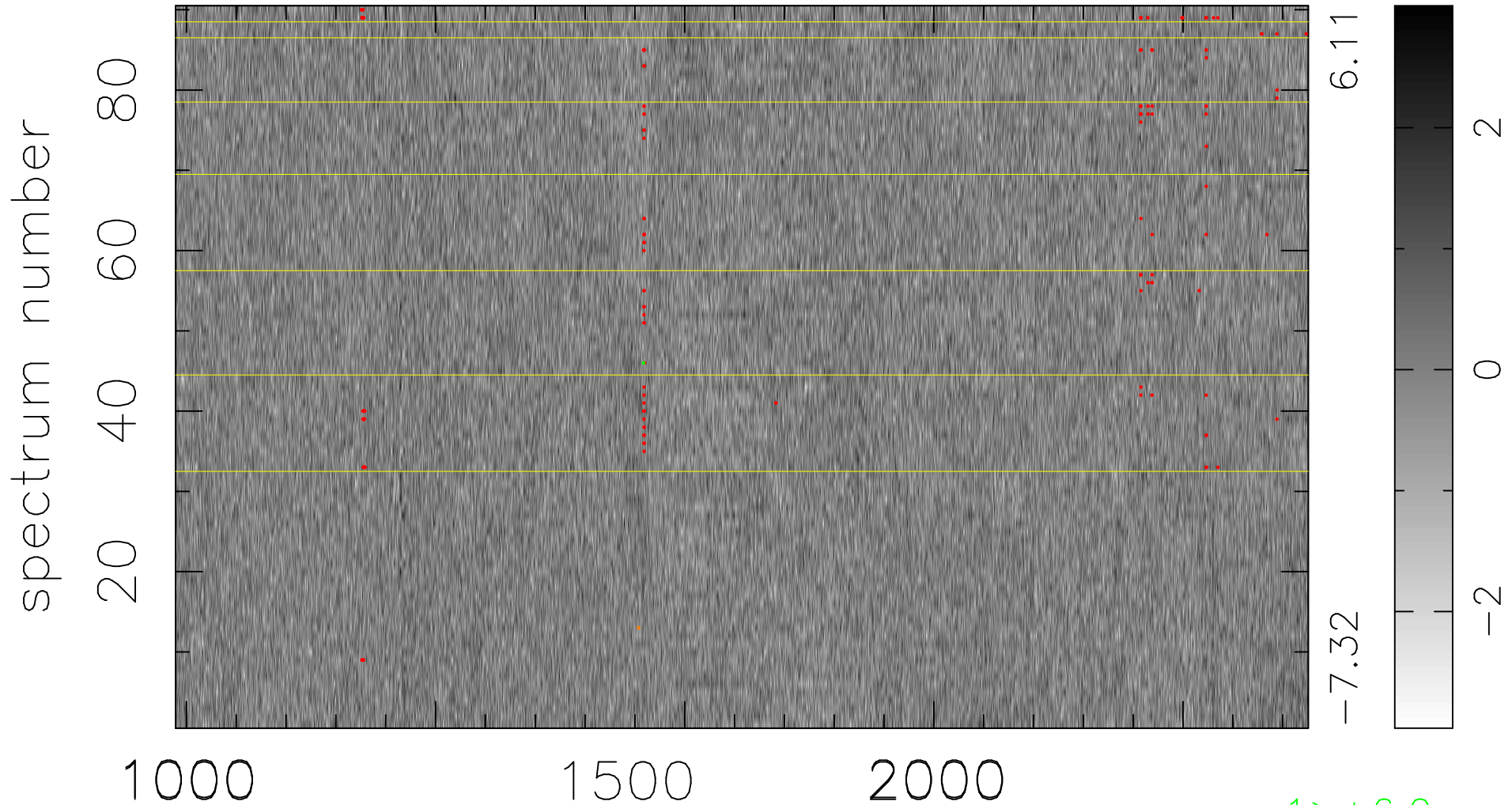


$$\chi(\lambda, t) = (\text{Data} - \text{Model AC}_5\text{B}_7\text{F}) / \sigma \chi$$

$$\chi^2 / (409230 - 5446) = 0.890 \Rightarrow 1.008$$

4547x90



bad:159=0.039% λ (Å) $z = 2.65456$

1 > +6.0 σ

1 < -6.0 σ