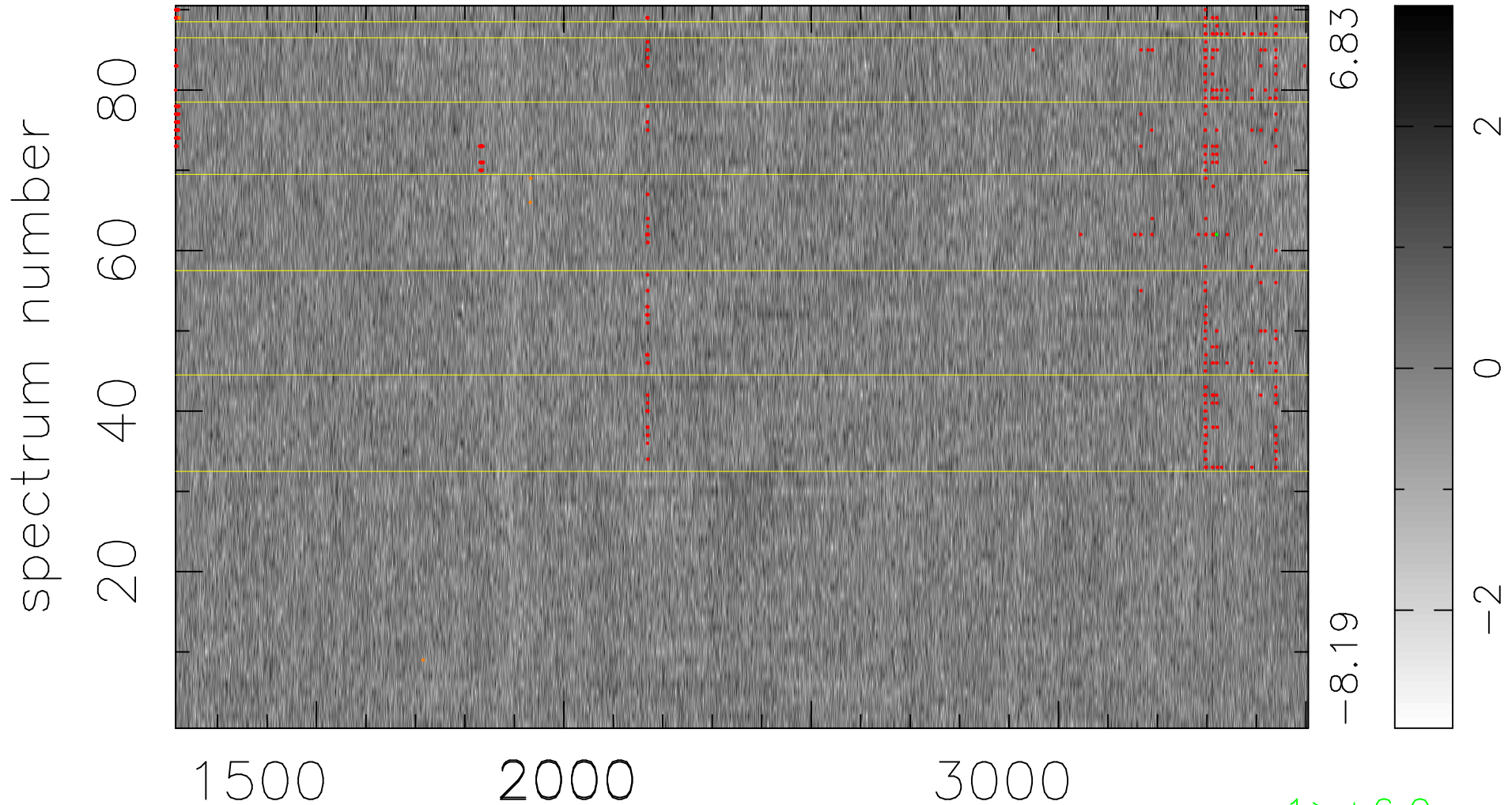


$$\chi(\lambda, t) = (\text{Data} - \text{Model } \text{AC}_5\text{B}_5\text{F}) / \sigma \chi$$

$$\chi^2 / (412200 - 5274) = 0.933 \Rightarrow 1.008$$

4580x90



bad:441=0.11%

λ (Å) $z = 1.58614$

1 > +6.0σ

5 < -6.0σ