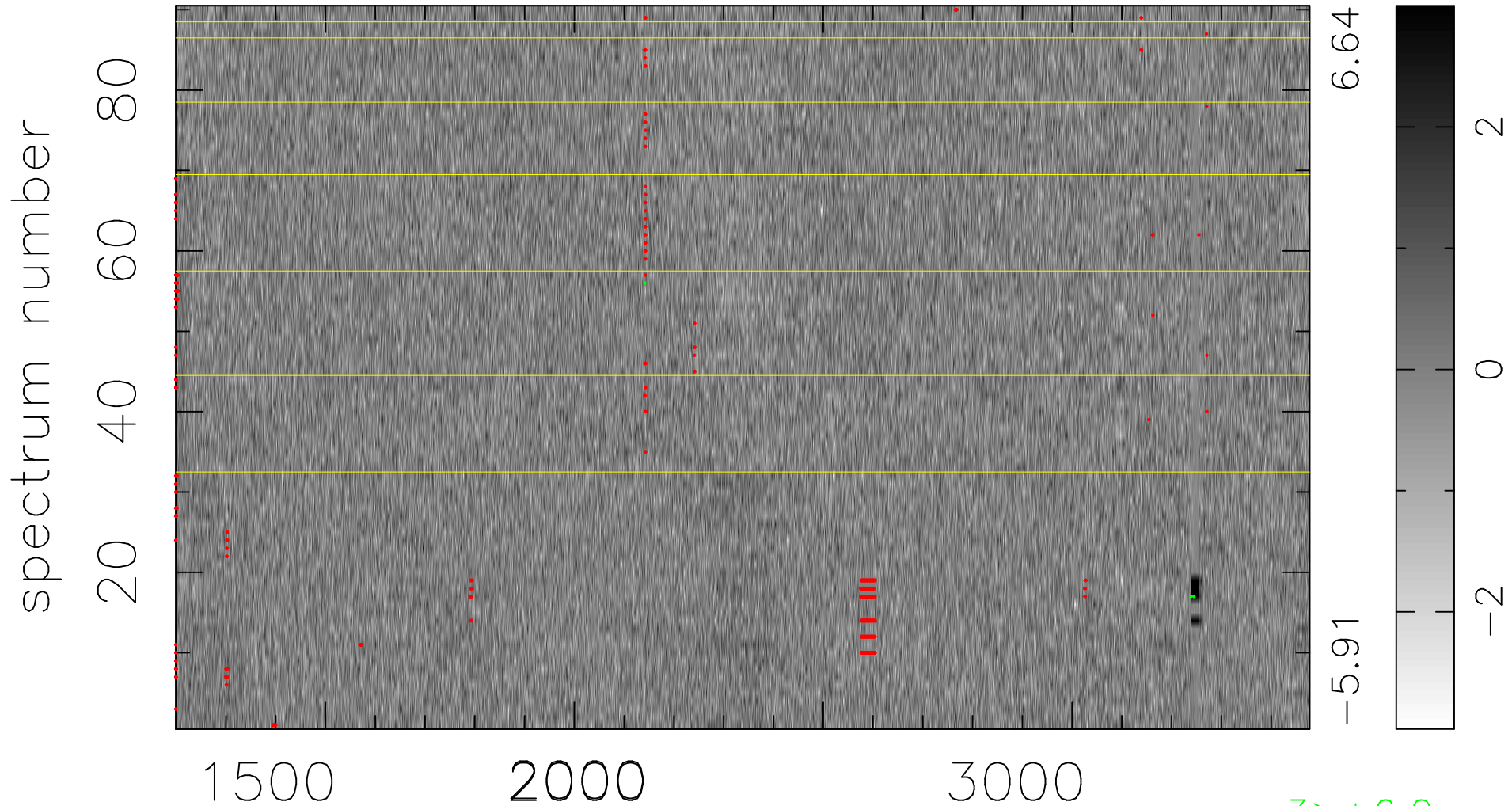


$$\chi(\lambda, t) = ( \text{Data} - \text{Model } \text{AC}_5\text{B}_5\text{F} ) / \sigma \chi$$

$$\chi^2 / (410130 - 5316) = 0.983 \Rightarrow 1.007$$

4557x90



bad:572=0.14%

$\lambda$  (Å)  $z = 1.61850$

3 > +6.0 $\sigma$