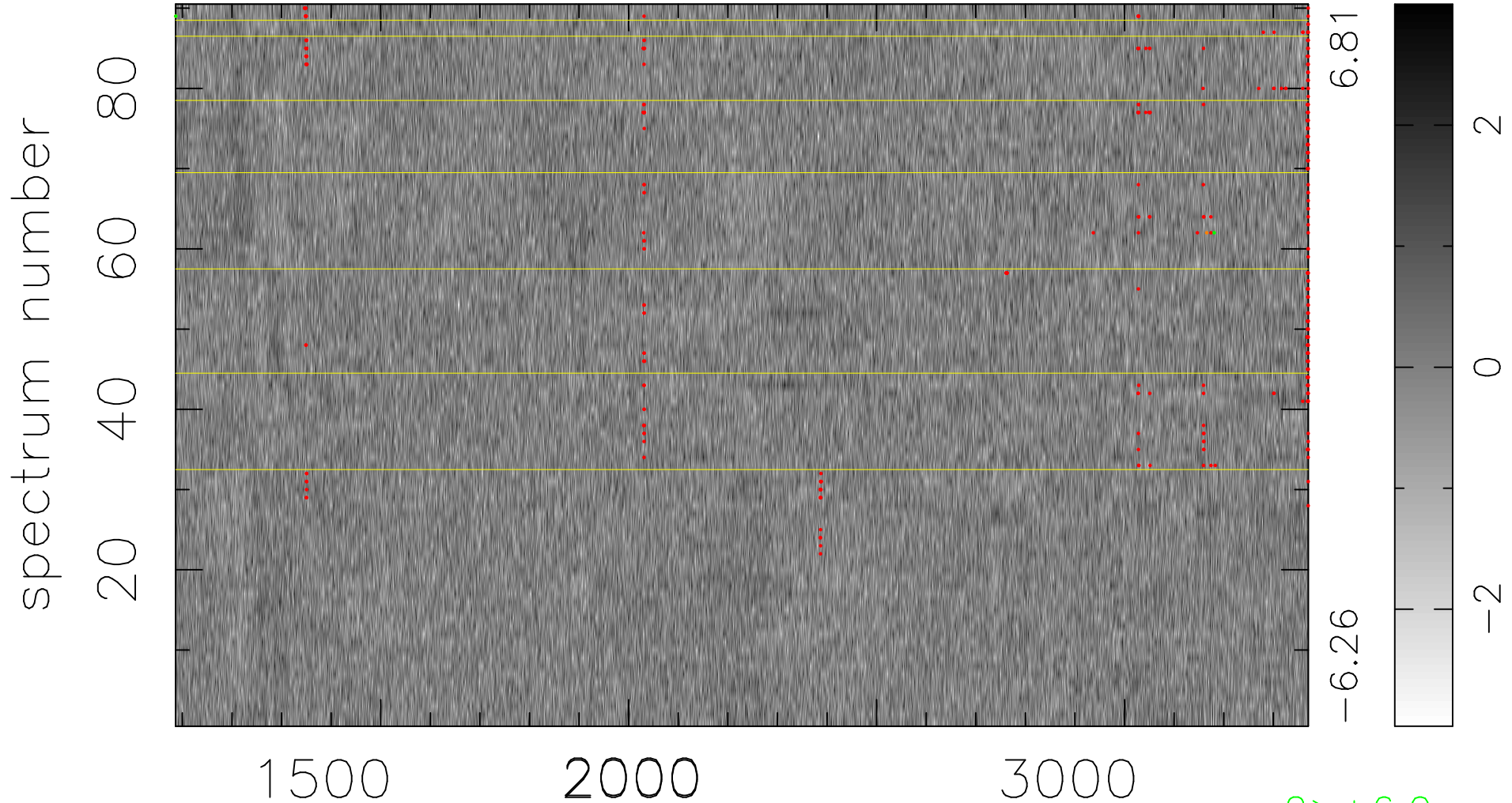


$$\chi(\lambda, t) = (\text{Data} - \text{Model } AC_5) / \sigma \chi$$

$$\chi^2 / (411210 - 5050) = 0.918 \Rightarrow 1.007$$

4569x90



bad:337=0.082% λ (Å) $z = 1.75632$

2 > +6.0 σ

2 < -6.0 σ