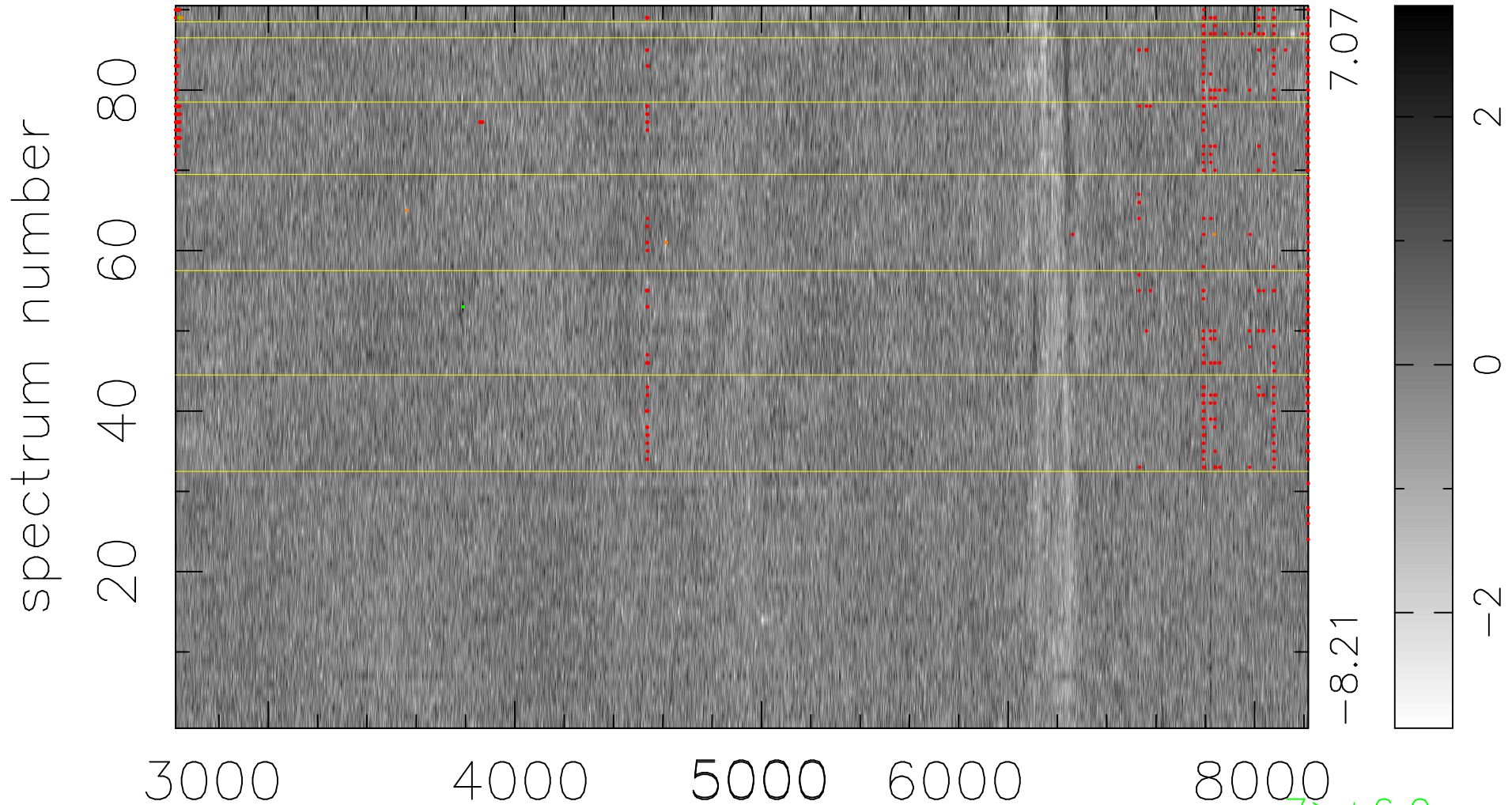


$$\chi(\lambda, t) = (\text{Data} - \text{Model } \text{AC}_5\text{B}_3\text{F}) / \sigma \chi$$

$$\chi^2 / (413460 - 5089) = 0.947 \Rightarrow 0.984$$

4594x90



bad:702=0.17%

λ (Å) $z = 0.23814$

7 > +6.0σ

9 < -6.0σ