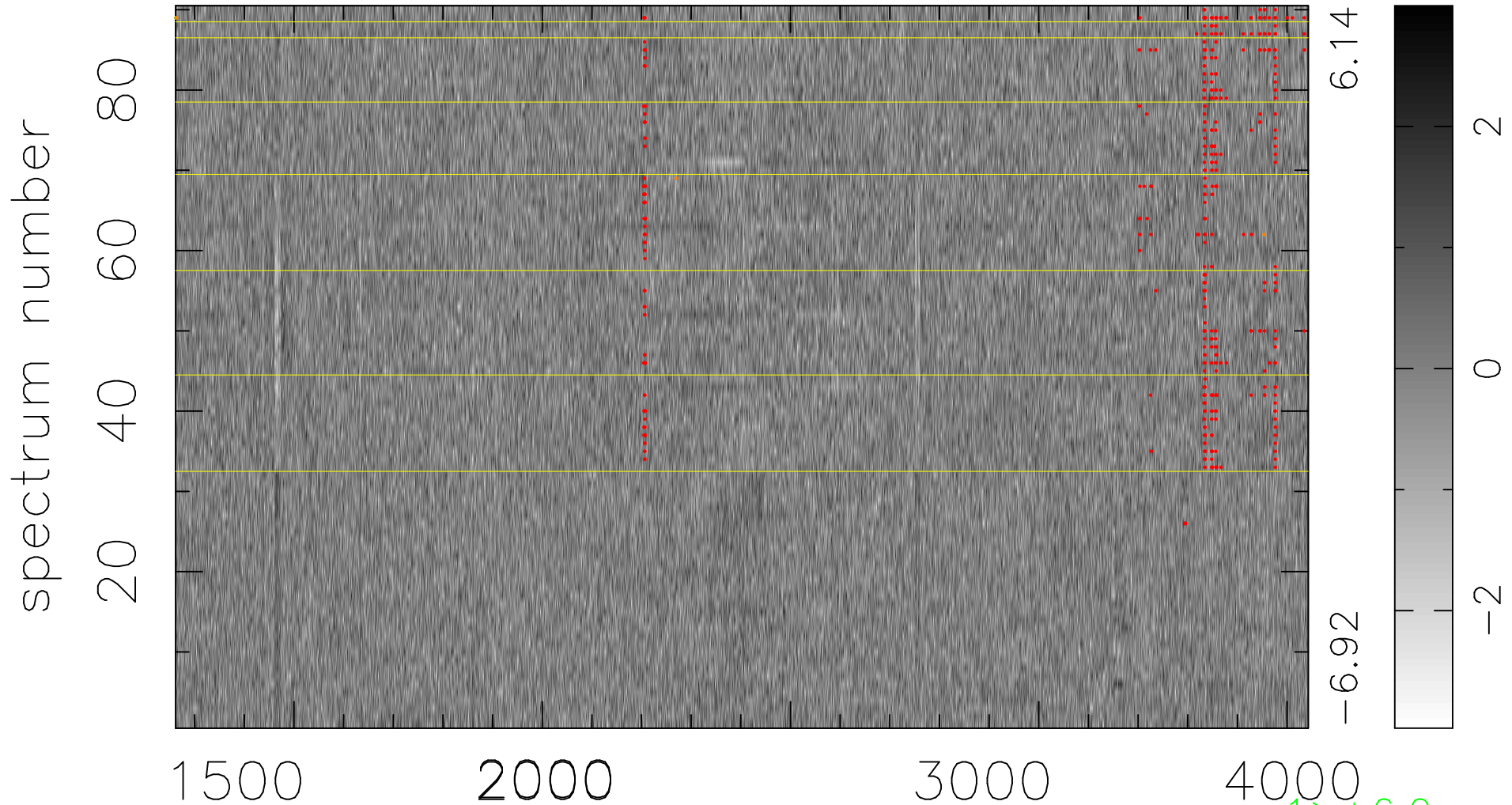


$$\chi(\lambda, t) = (\text{Data} - \text{Model } \text{AC}_5\text{B}_4\text{F}) / \sigma \chi$$

$$\chi^2 / (410670 - 5165) = 0.929 \Rightarrow 1.007$$

4563x90



bad:462=0.11%

λ (Å) $z = 1.54251$

1 > +6.0σ

4 < -6.0σ