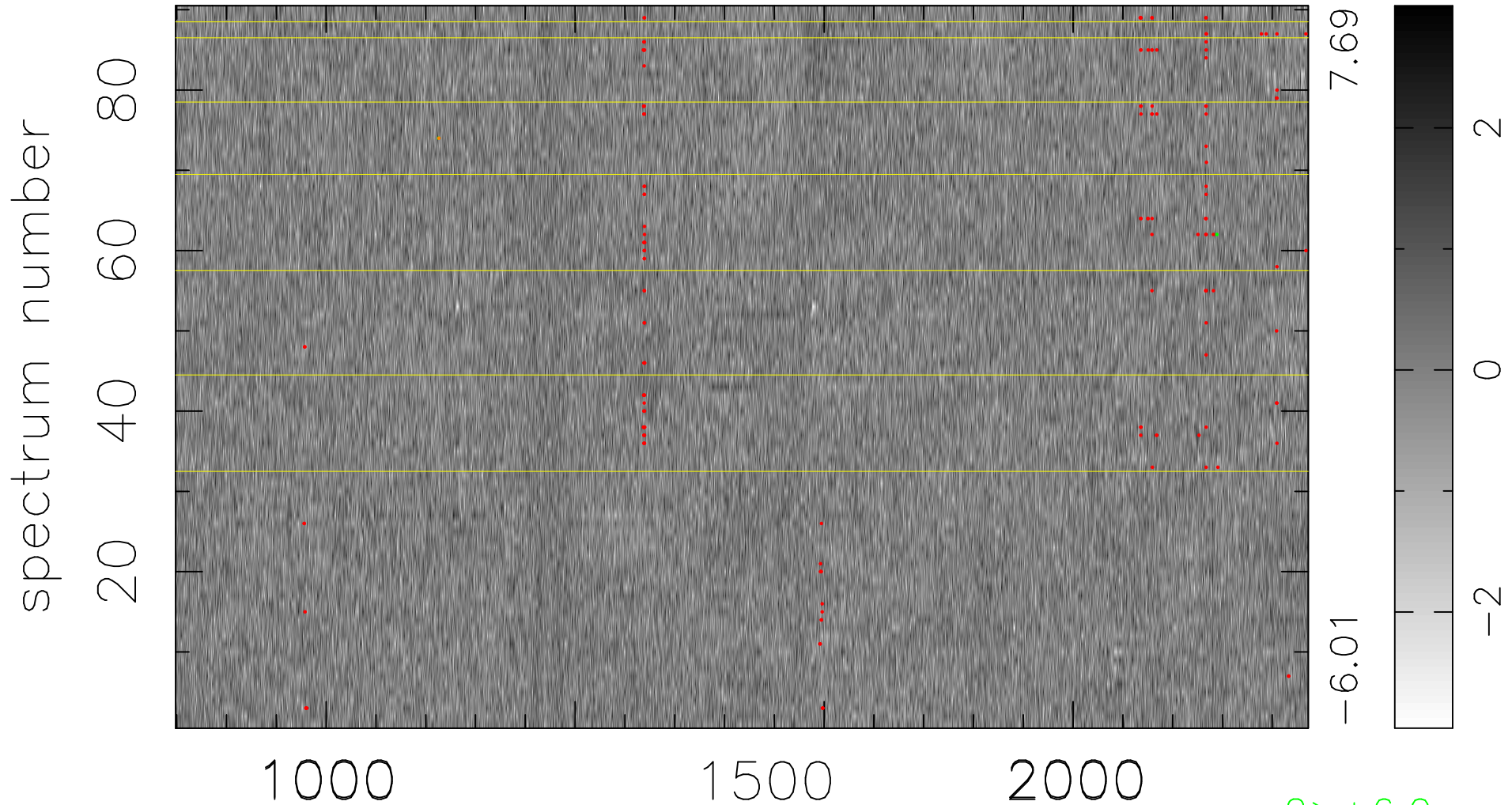


$$\chi(\lambda, t) = (\text{Data} - \text{Model } \text{AC}_5\text{B}_6\text{F}) / \sigma \chi$$

$$\chi^2 / (409500 - 5359) = 0.918 \Rightarrow 1.008$$

4550x90



bad:160=0.039% λ (Å) $z = 3.15673$

2 > +6.0 σ

1 < -6.0 σ