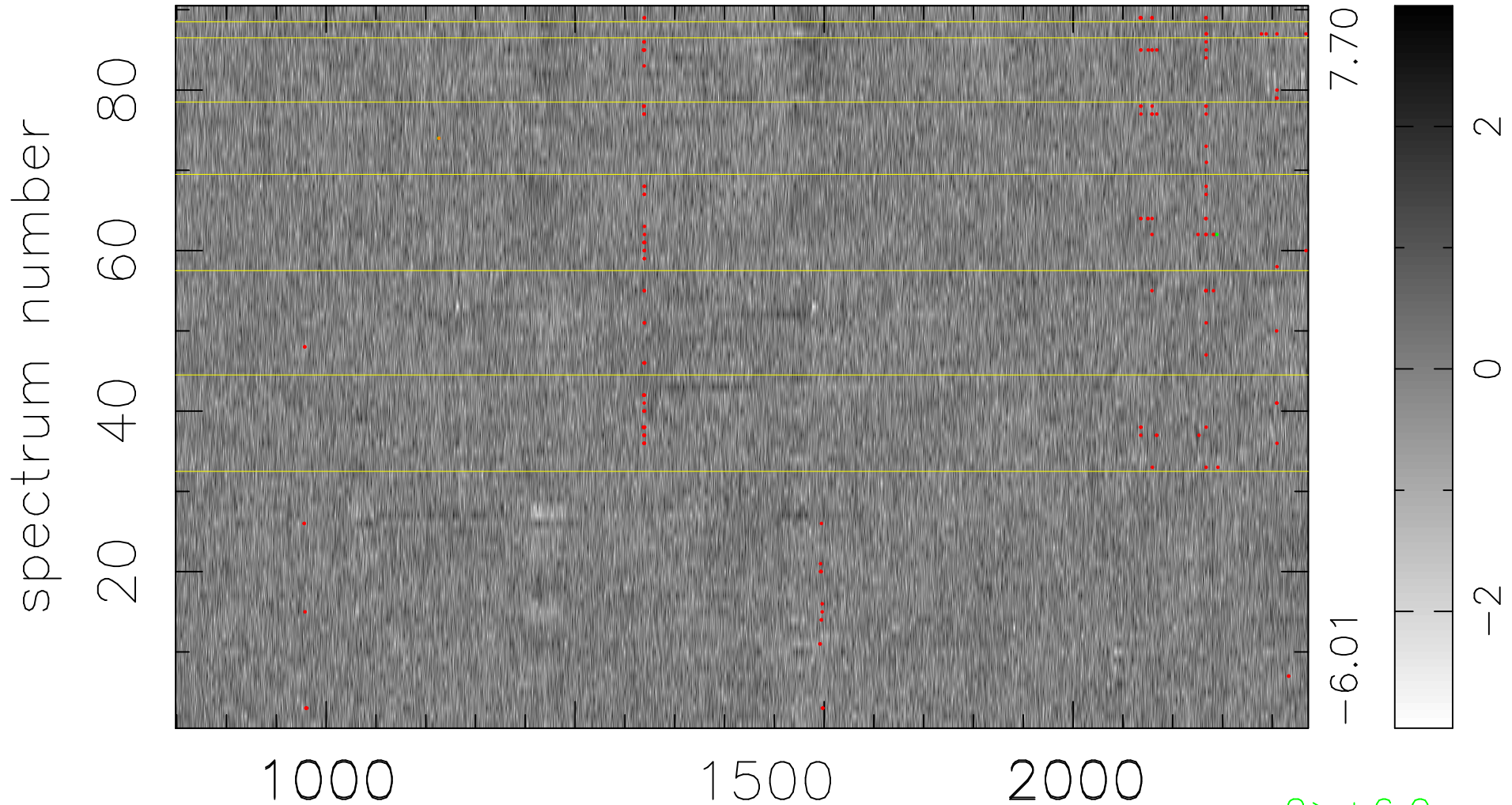


$$\chi(\lambda, t) = (\text{Data} - \text{Model AC}_5\text{F}) / \sigma \chi$$

$$\chi^2 / (409500 - 5222) = 0.920 \Rightarrow 1.006$$

4550x90



bad:160=0.039% λ (Å) $z = 3.15673$

2 > +6.0σ
1 < -6.0σ