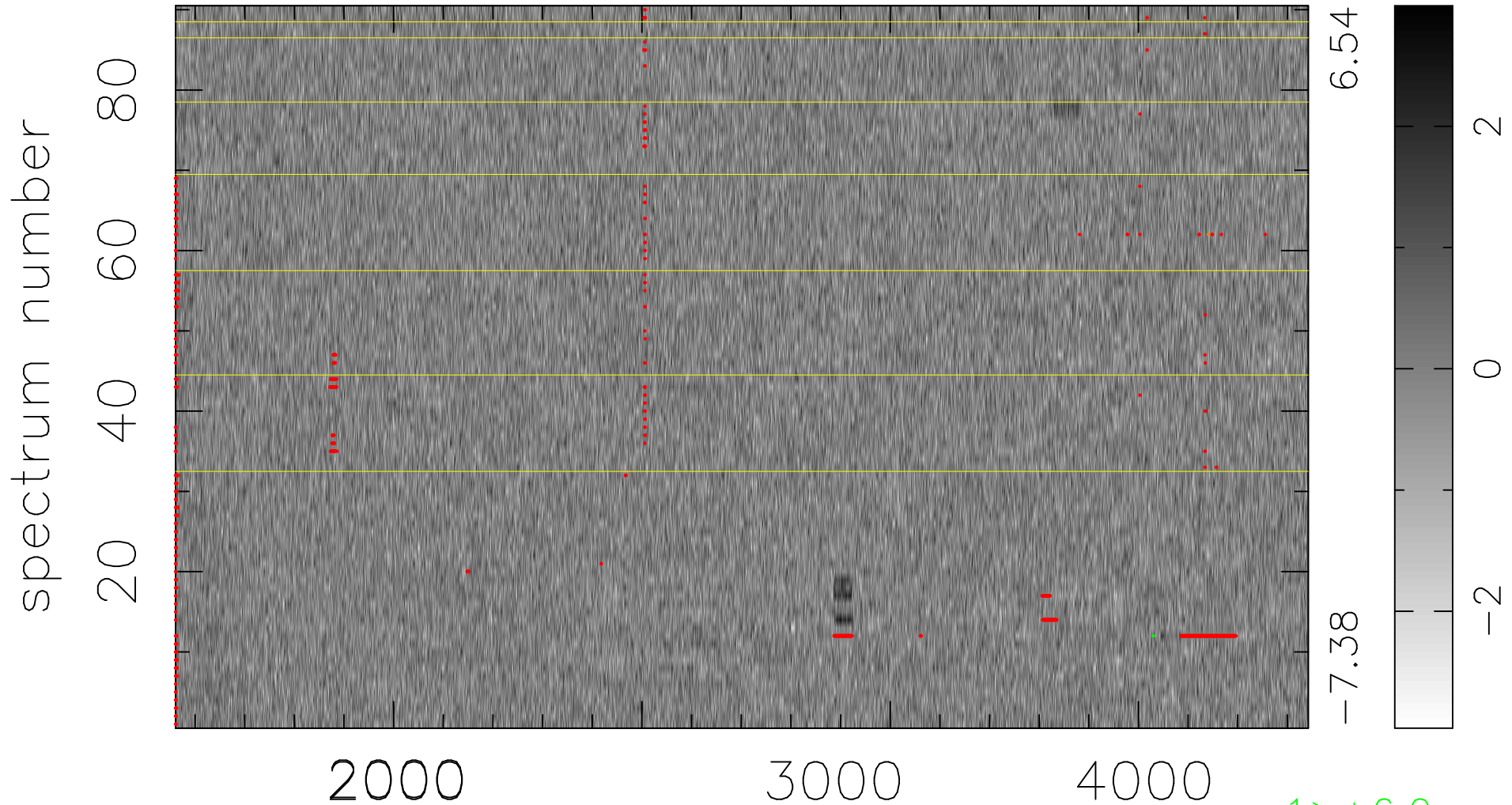


$$\chi(\lambda, t) = (\text{Data} - \text{Model } \text{AC}_5\text{B}_3\text{F}) / \sigma \chi$$

$$\chi^2 / (410670 - 5098) = 0.894 \Rightarrow 1.007$$

4563x90



bad:909=0.22%

λ (Å) $z = 1.21473$

1 > +6.0 σ

1 < -6.0 σ