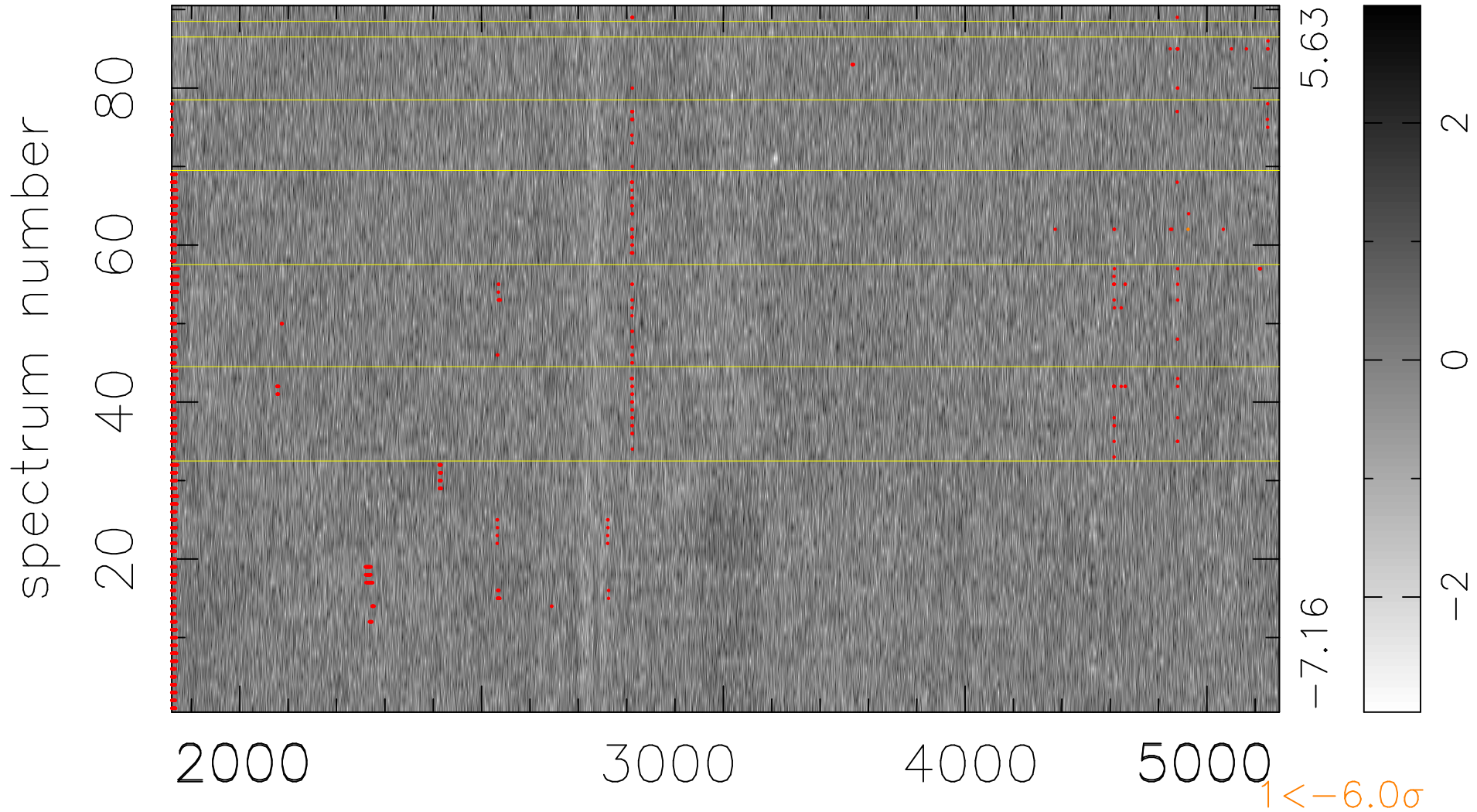


$$\chi(\lambda, t) = (\text{Data} - \text{Model } \text{AC}_5\text{B}_4\text{F}) / \sigma \chi$$

$$\chi^2 / (412380 - 5198) = 0.902 \Rightarrow 1.008$$

4582 × 90



bad:1567=0.38% λ (Å) $z = 0.92424$