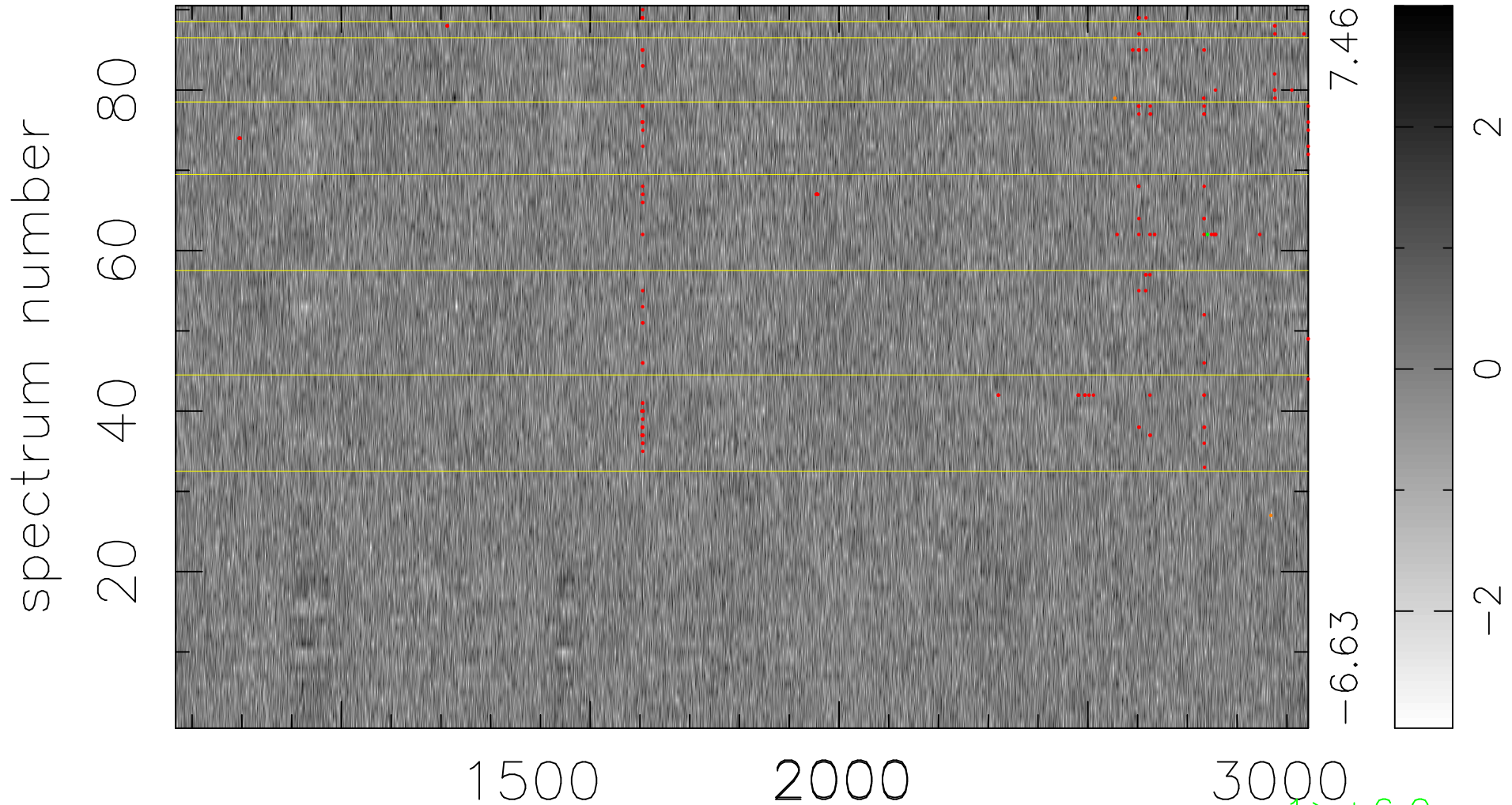


$$\chi(\lambda, t) = (\text{Data} - \text{Model AC}_5\text{F}) / \sigma \chi$$

$$\chi^2 / (409770 - 5312) = 0.908 \Rightarrow 1.007$$

4553x90



bad:153=0.037% λ (Å) $z = 2.35289$

1 > +6.0σ

2 < -6.0σ