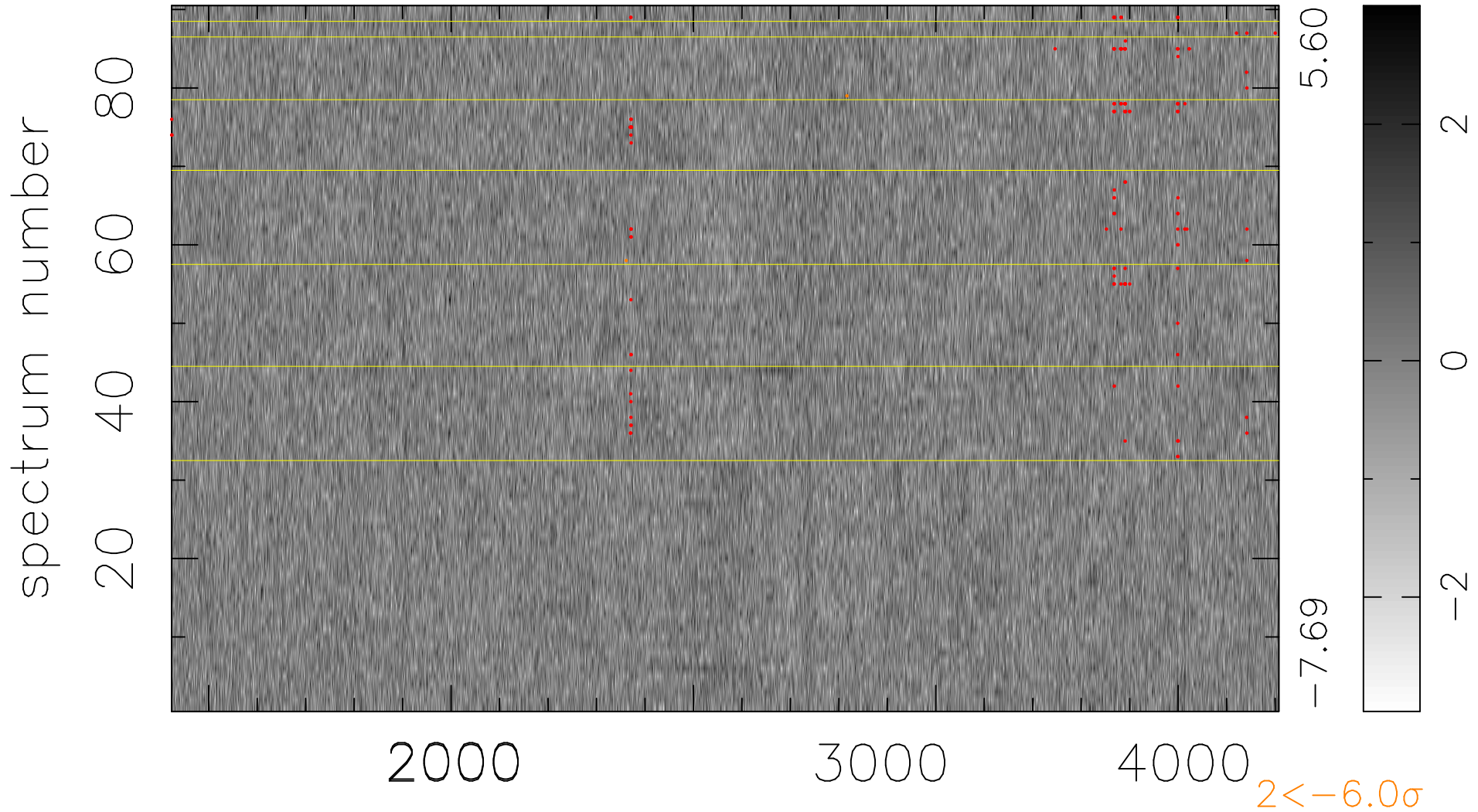


$$\chi(\lambda, t) = (\text{Data} - \text{Model } \text{AC}_5\text{B}_4\text{F}) / \sigma \chi$$

$$\chi^2 / (411210 - 5204) = 0.901 \Rightarrow 1.008$$

4569x90



bad:135=0.033% λ (Å) $z = 1.35661$