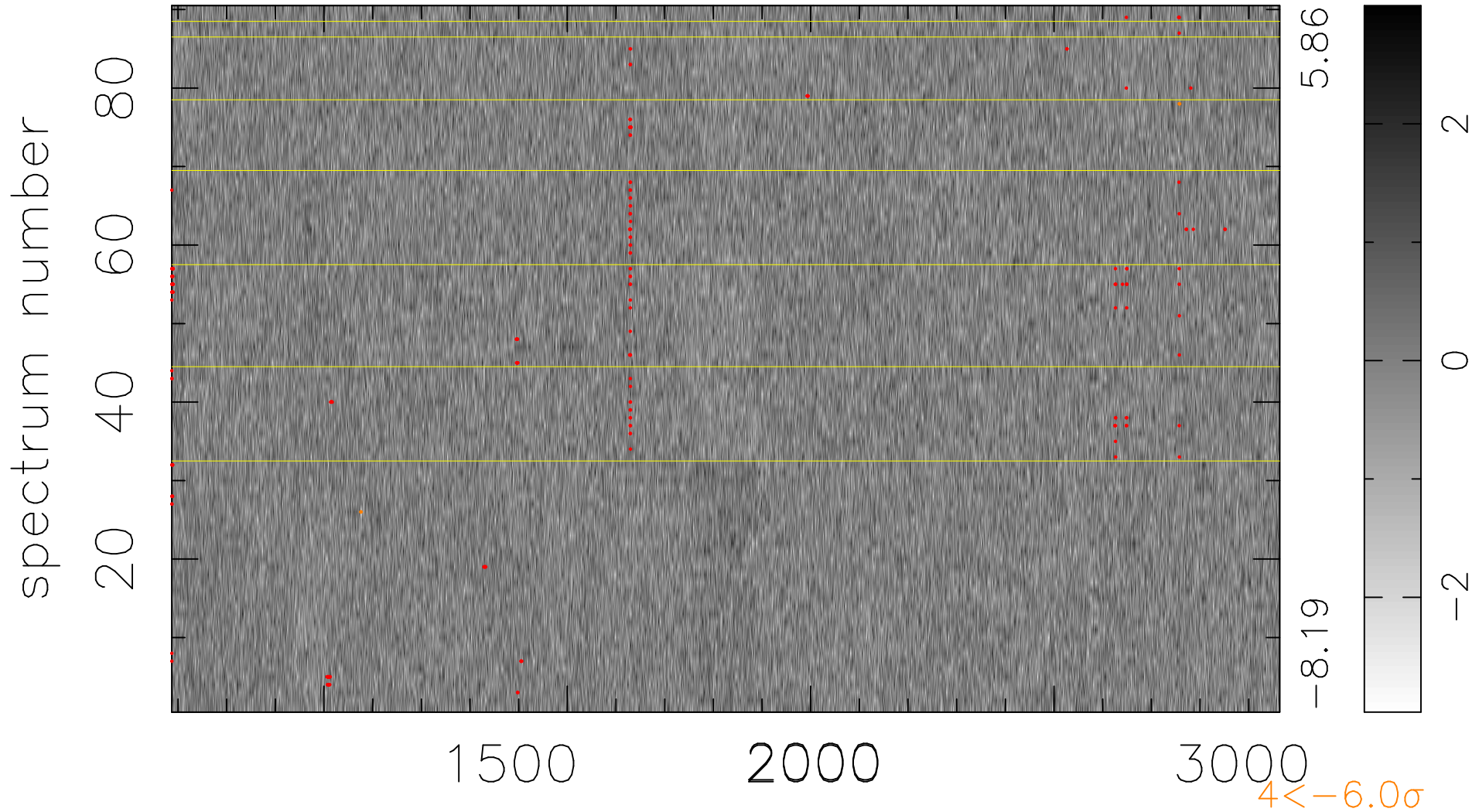


$$\chi(\lambda, t) = ( \text{Data} - \text{Model } \text{AC}_5\text{B}_7\text{F} ) / \sigma \chi$$

$$\chi^2 / (409860 - 5485) = 0.892 \Rightarrow 1.008$$

4554x90



bad:211=0.051%  $\lambda$  (Å)  $z = 2.31635$