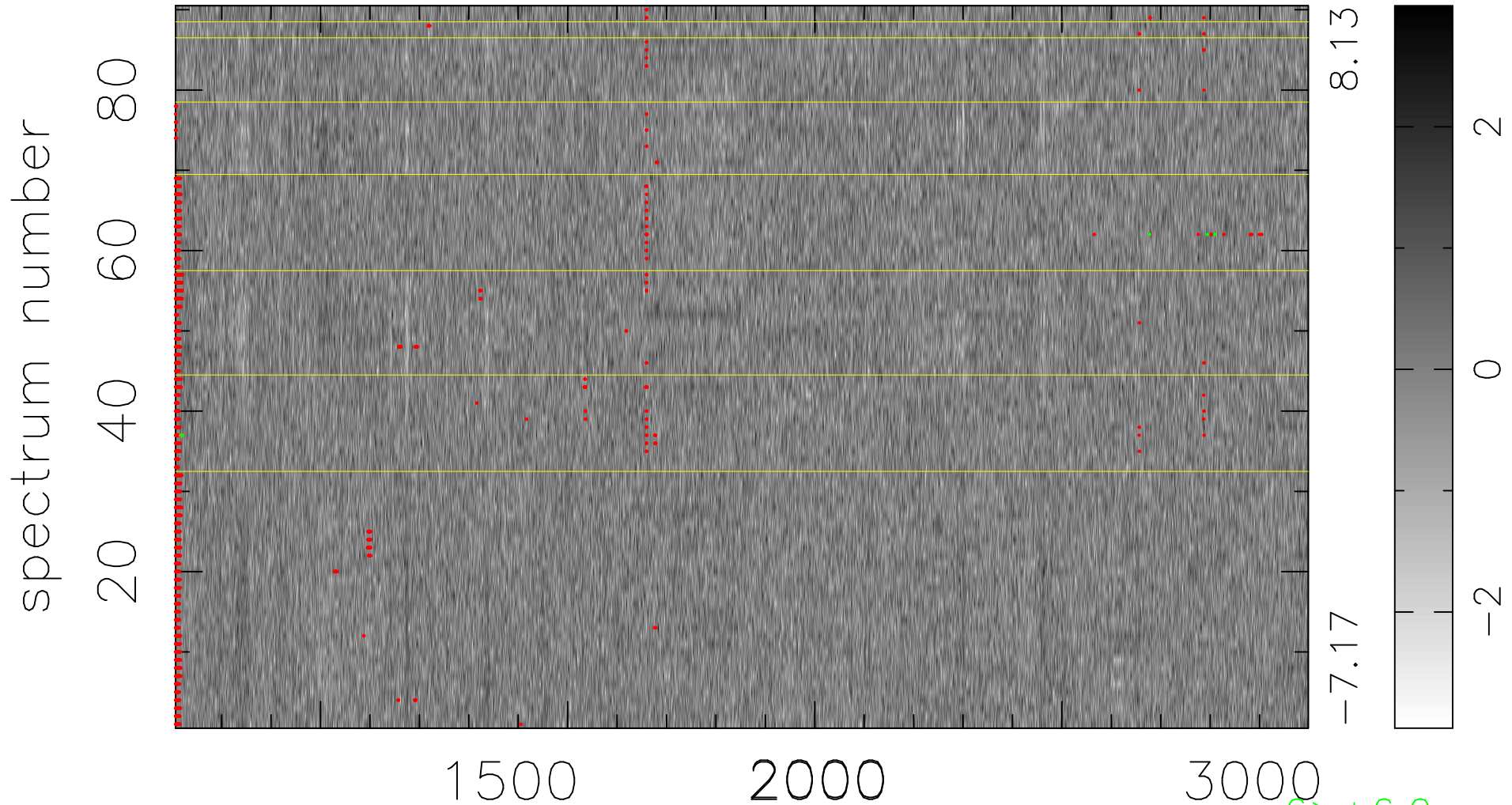


$$\chi(\lambda, t) = (\text{Data} - \text{Model } \text{AC}_5\text{B}_7\text{F}) / \sigma \chi$$

$$\chi^2 / (412560 - 5469) = 0.931 \Rightarrow 1.007$$

4584x90



bad:1554=0.38% λ (Å) $z = 2.27054$

$6 > +6.0\sigma$

$2 < -6.0\sigma$