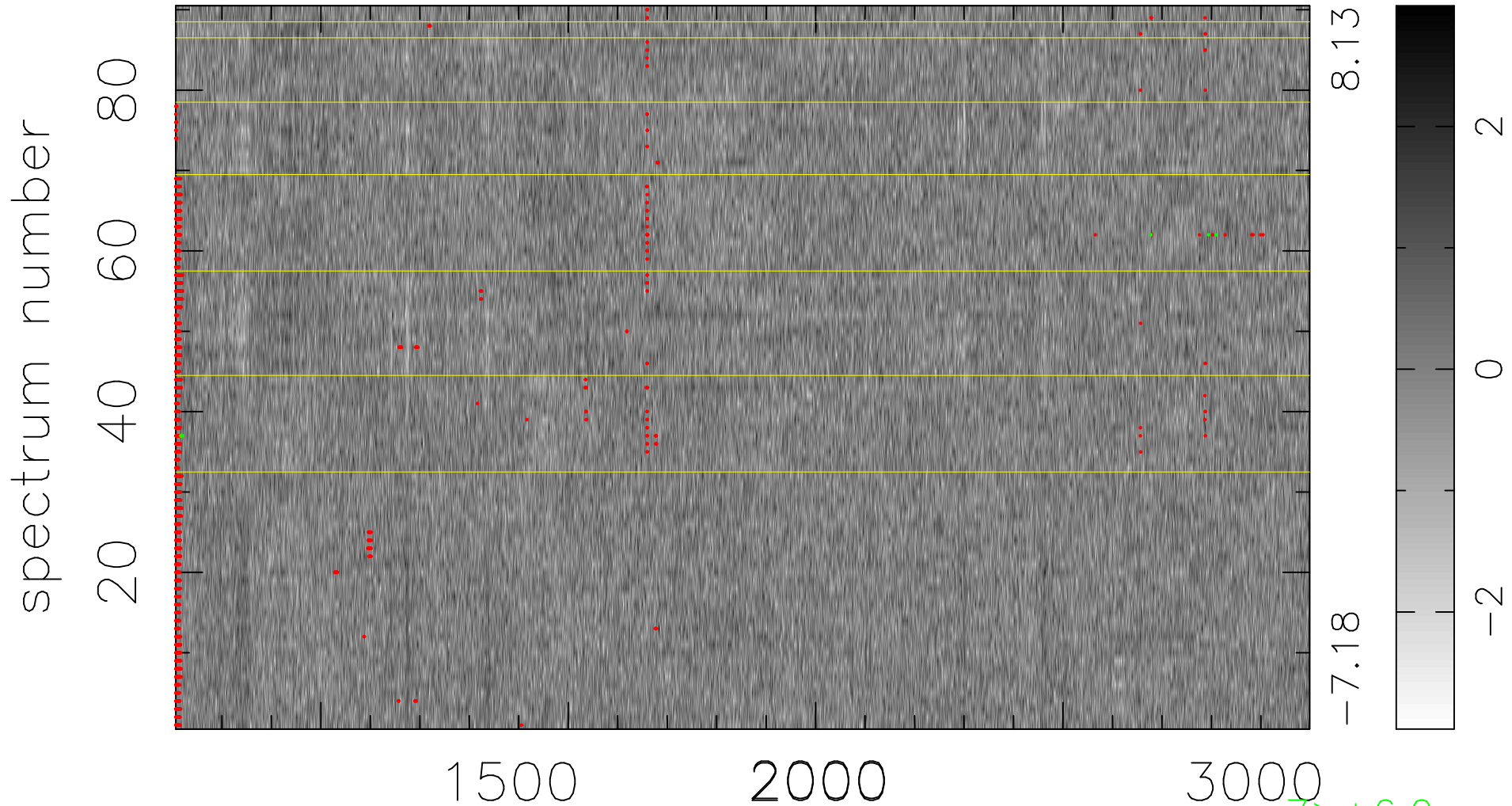


$$\chi(\lambda, t) = (\text{Data} - \text{Model AC}_5\text{F}) / \sigma \chi$$

$$\chi^2 / (412560 - 5342) = 0.938 \Rightarrow 1.008$$

4584 × 90



bad:1554=0.38% λ (Å) $z = 2.27054$

$7 > +6.0\sigma$

$2 < -6.0\sigma$