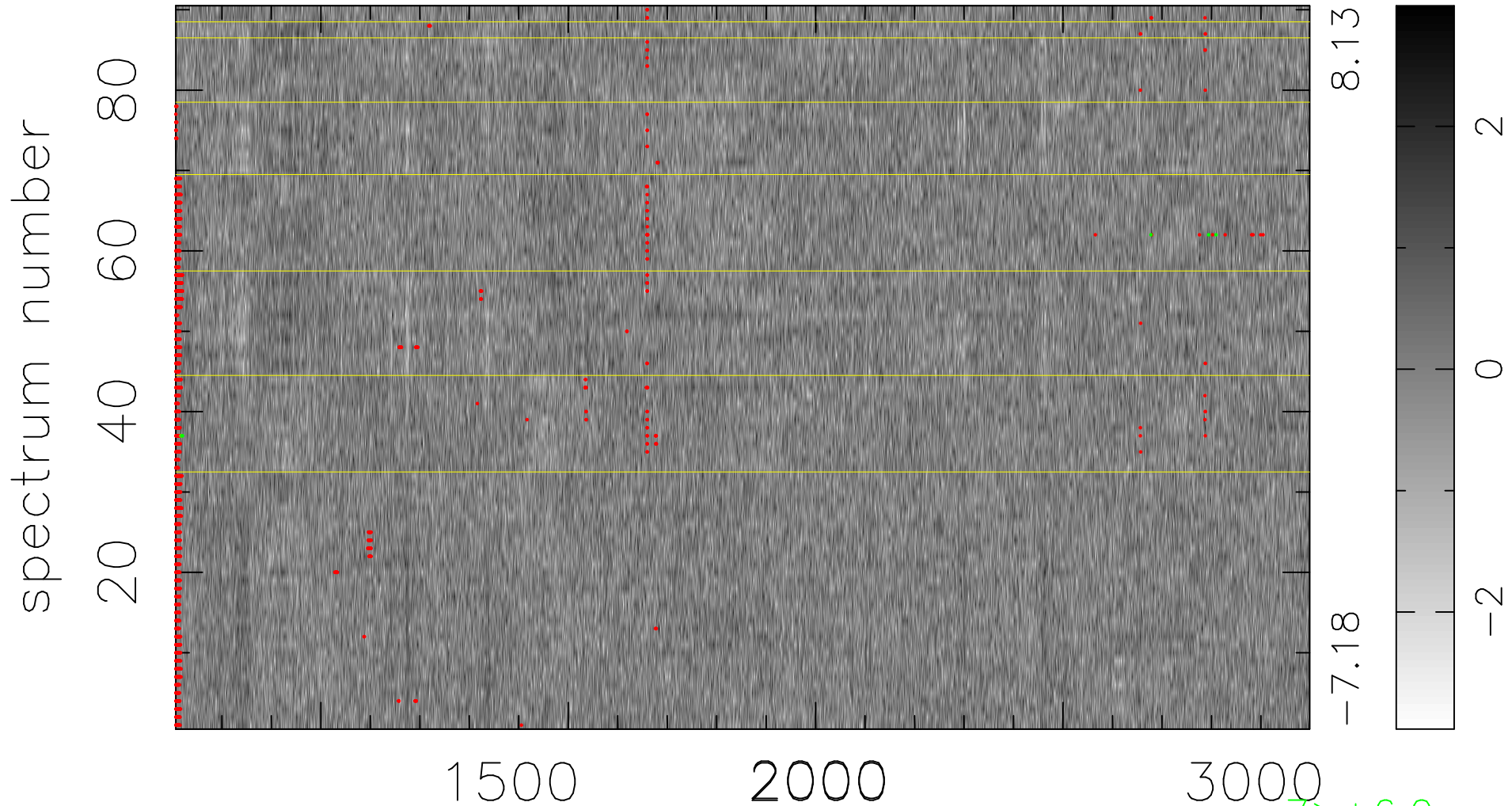


$$\chi(\lambda,t) = (\text{Data} - \text{Model } AC_5) / \sigma \chi$$

$$\chi^2 / (412560 - 5252) = 0.940 \Rightarrow 1.007$$

4584x90



bad:1554=0.38% λ (Å) $z = 2.27054$

$7 > +6.0\sigma$

$2 < -6.0\sigma$