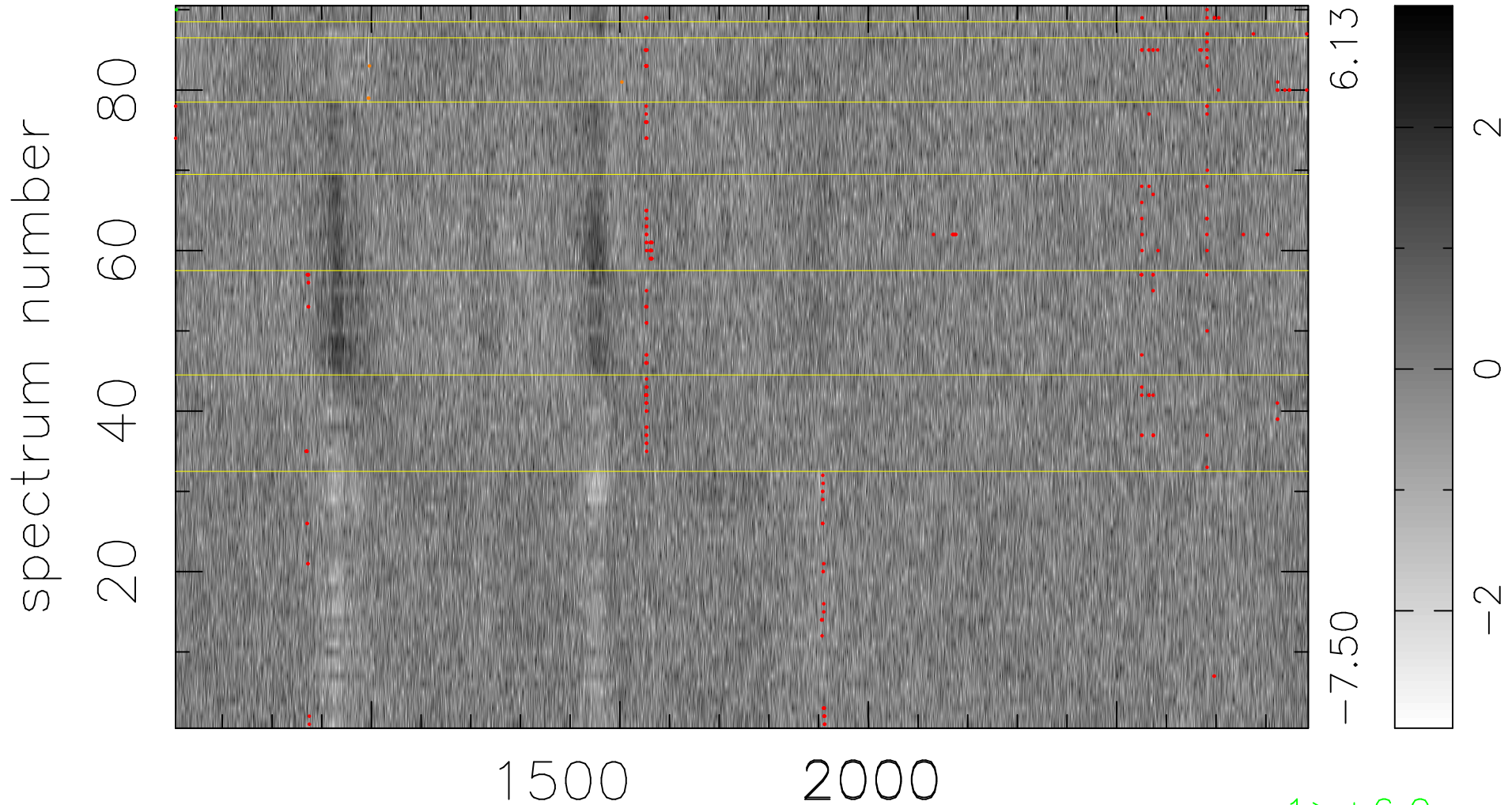


$$\chi(\lambda,t) = (\text{Data} - \text{Model } AC_5) / \sigma \chi$$

$$\chi^2 / (410400 - 5232) = 0.951 \Rightarrow 1.009$$

4560x90



bad:231=0.056% λ (Å) $z = 2.43404$

1 > +6.0 σ

4 < -6.0 σ