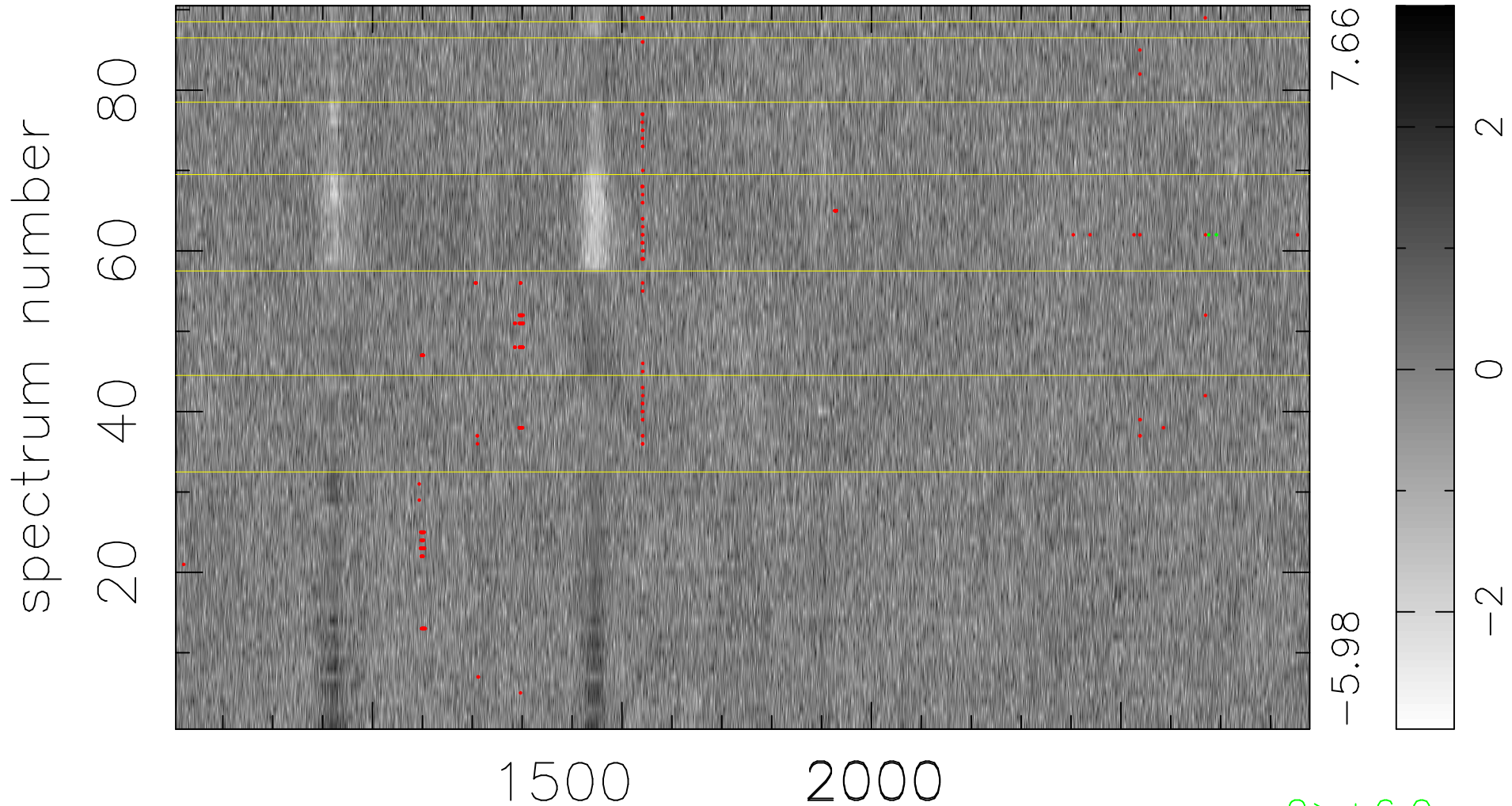


$$\chi(\lambda,t) = ( \text{Data} - \text{Model } AC_5 ) / \sigma \chi$$

$\chi^2 / (409140 - 5219) = 0.949 \Rightarrow 1.007$

4546x90



bad:238=0.058%  $\lambda$  (Å)  $z = 2.45349$

2 > +6.0 $\sigma$