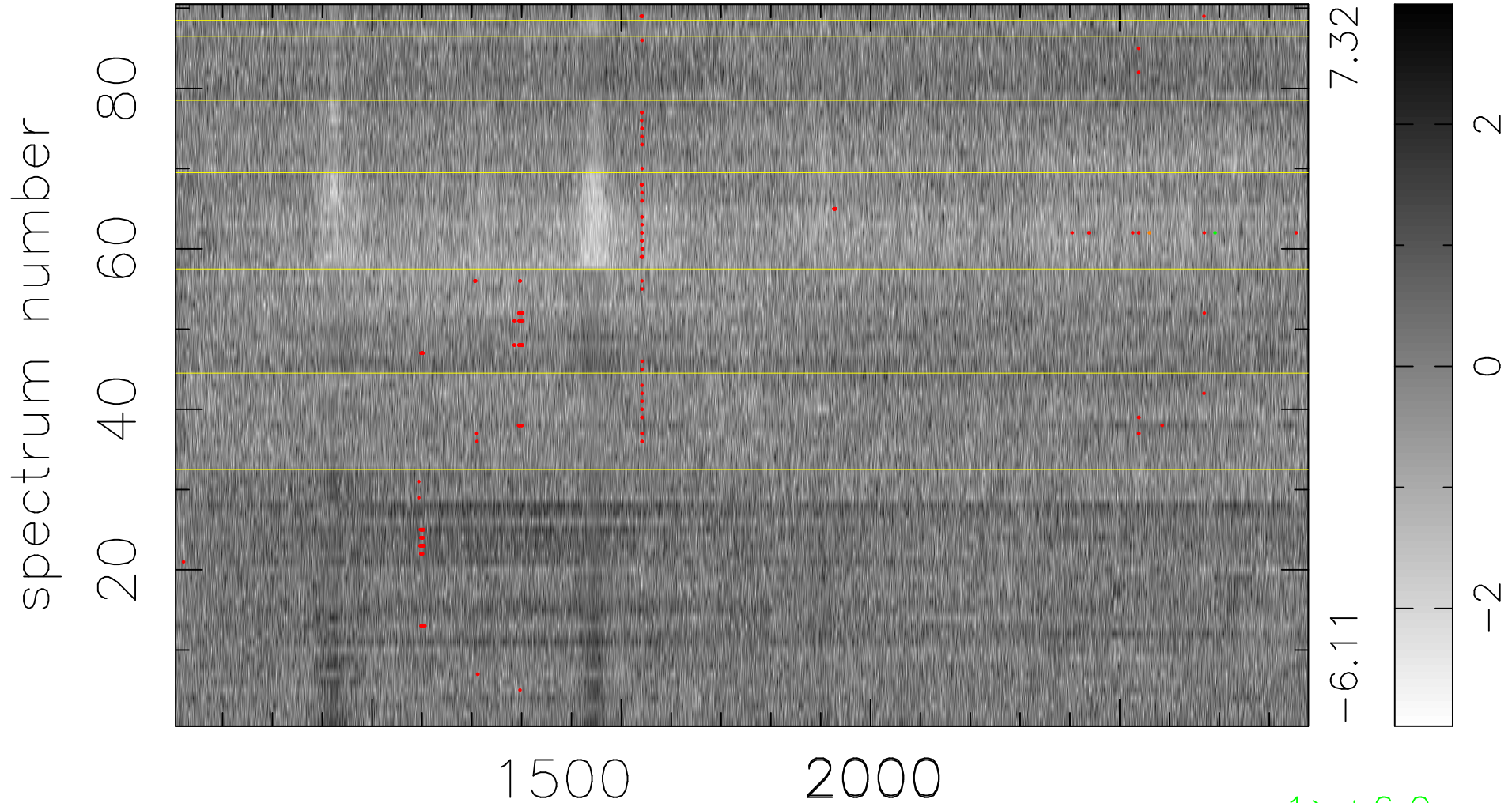


$$\chi(\lambda, t) = (\text{Data} - \text{Model A}) / \sigma \chi$$

$$\chi^2 / (409140 - 5219) = 1.058 \Rightarrow 1.007$$

4546x90



bad:238=0.058% λ (Å) $z = 2.45349$

1 > +6.0 σ

1 < -6.0 σ