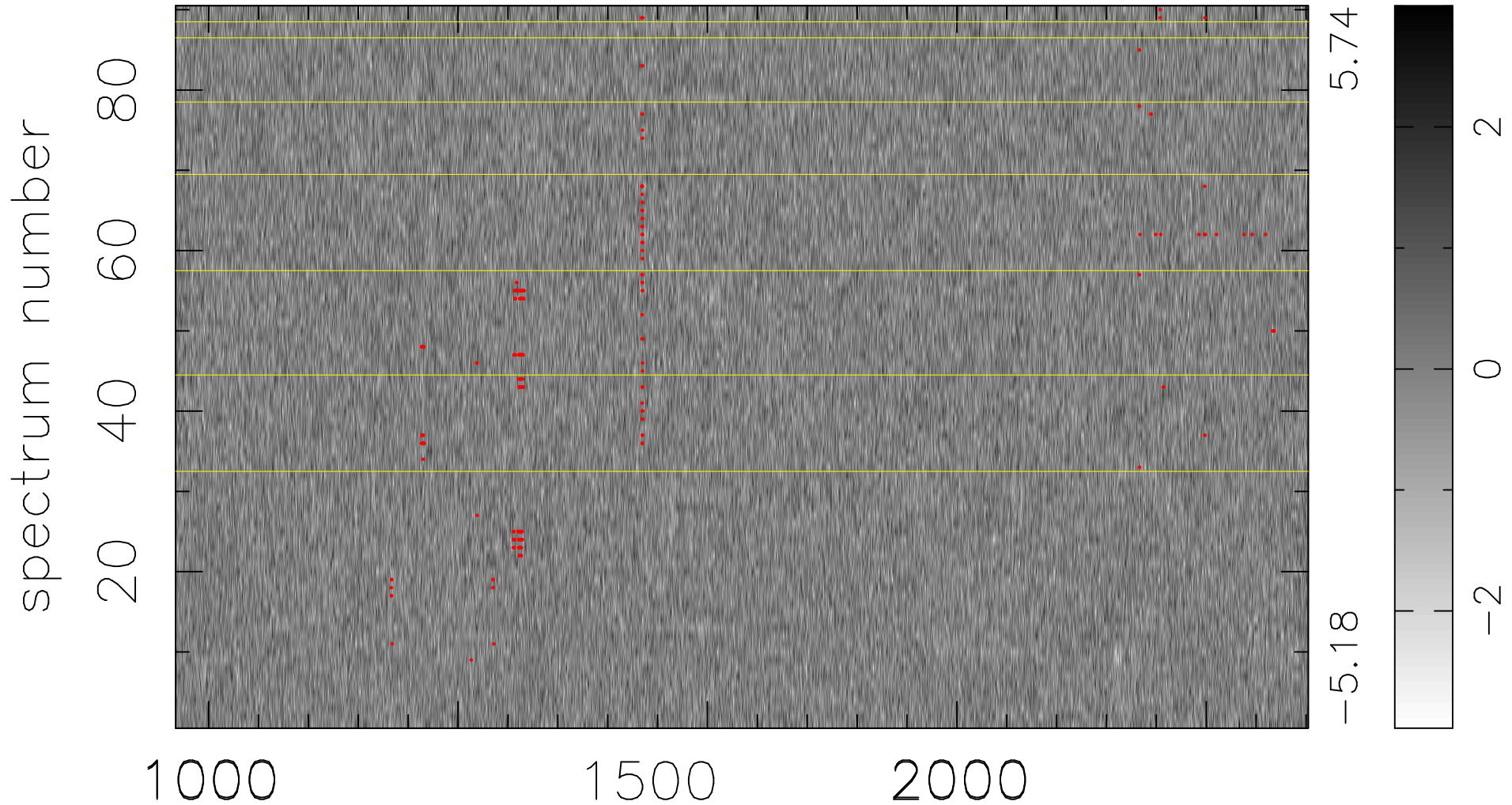


$$\chi(\lambda, t) = (\text{Data} - \text{Model } \text{AC}_5\text{B}_6\text{F}) / \sigma \chi$$

$$\chi^2 / (408780 - 5322) = 0.912 \Rightarrow 1.008$$

4542x90



bad:284=0.069% λ (\AA) $z = 2.73785$