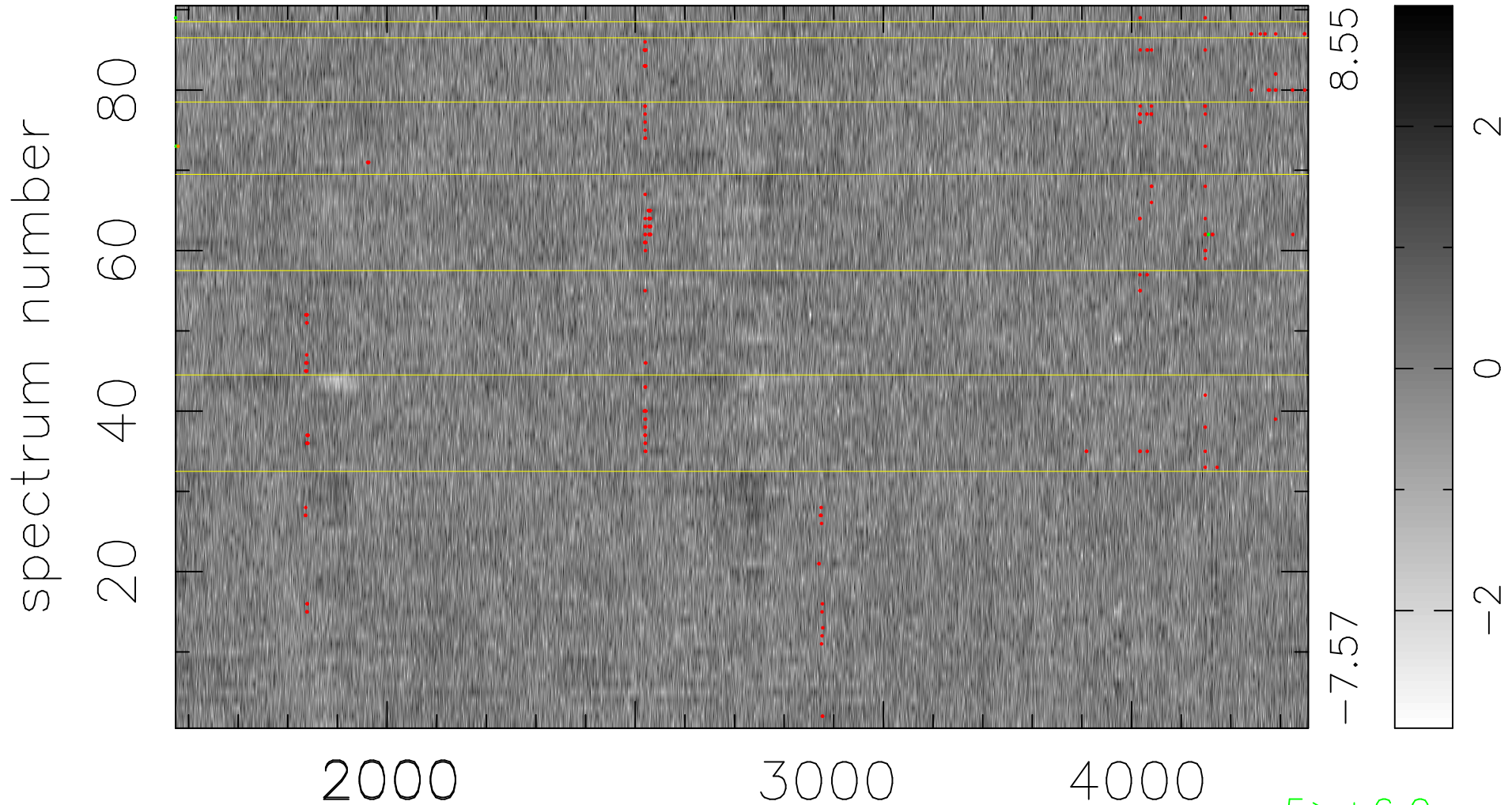


$$\chi(\lambda, t) = ( \text{Data} - \text{Model AC}_5\text{F} ) / \sigma \chi$$

$$\chi^2 / (410850 - 5029) = 0.892 \Rightarrow 1.007$$

4565x90



bad:208=0.051%  $\lambda$  (Å)  $z = 1.20042$

5 > +6.0 $\sigma$

2 < -6.0 $\sigma$