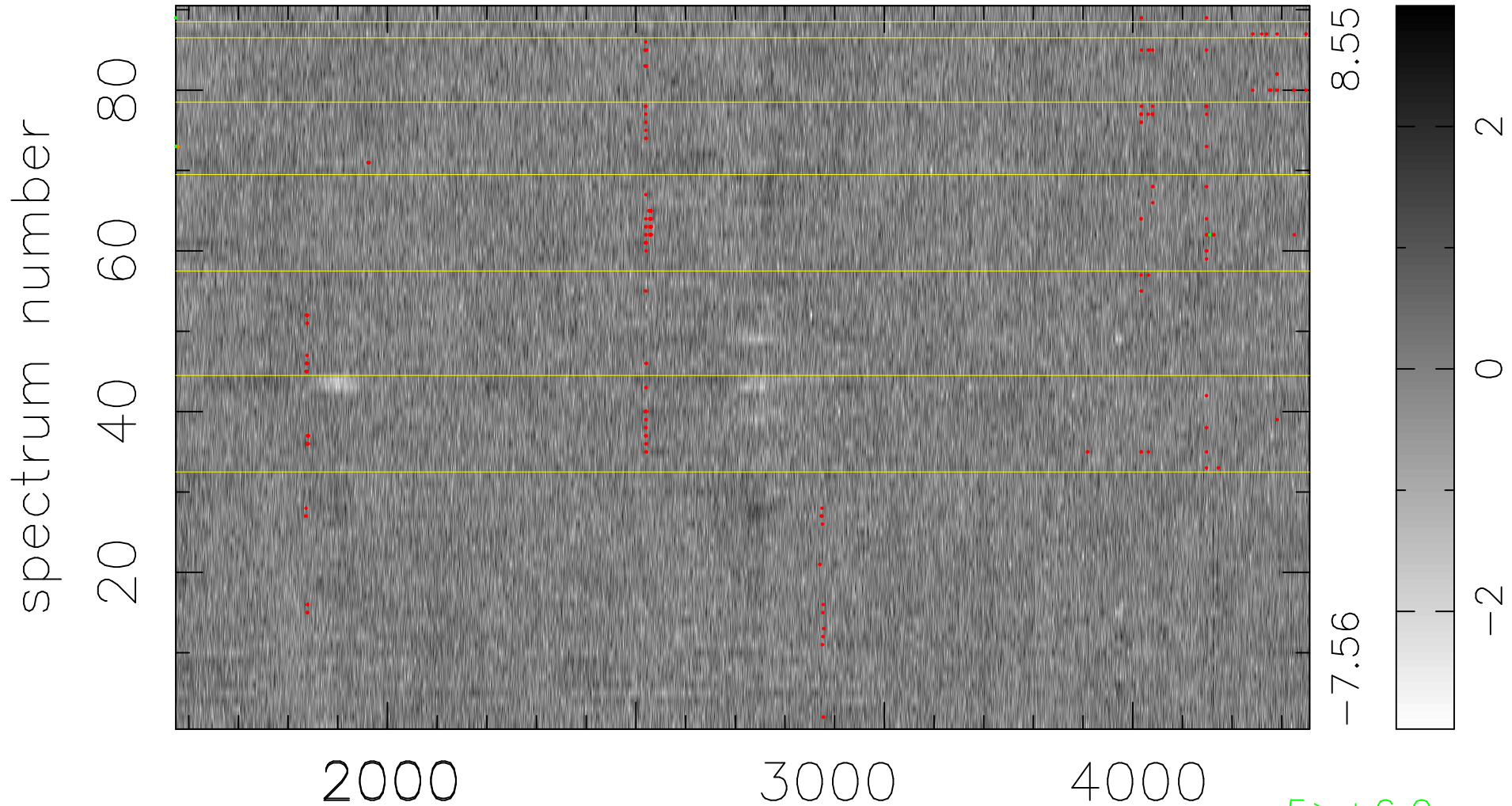


$$\chi(\lambda, t) = (\text{Data} - \text{Model } AC_5) / \sigma \chi$$

$$\chi^2 / (410850 - 4939) = 0.892 \Rightarrow 1.007$$

4565x90



bad:208=0.051% λ (Å) $z = 1.20042$

5 > +6.0 σ

2 < -6.0 σ