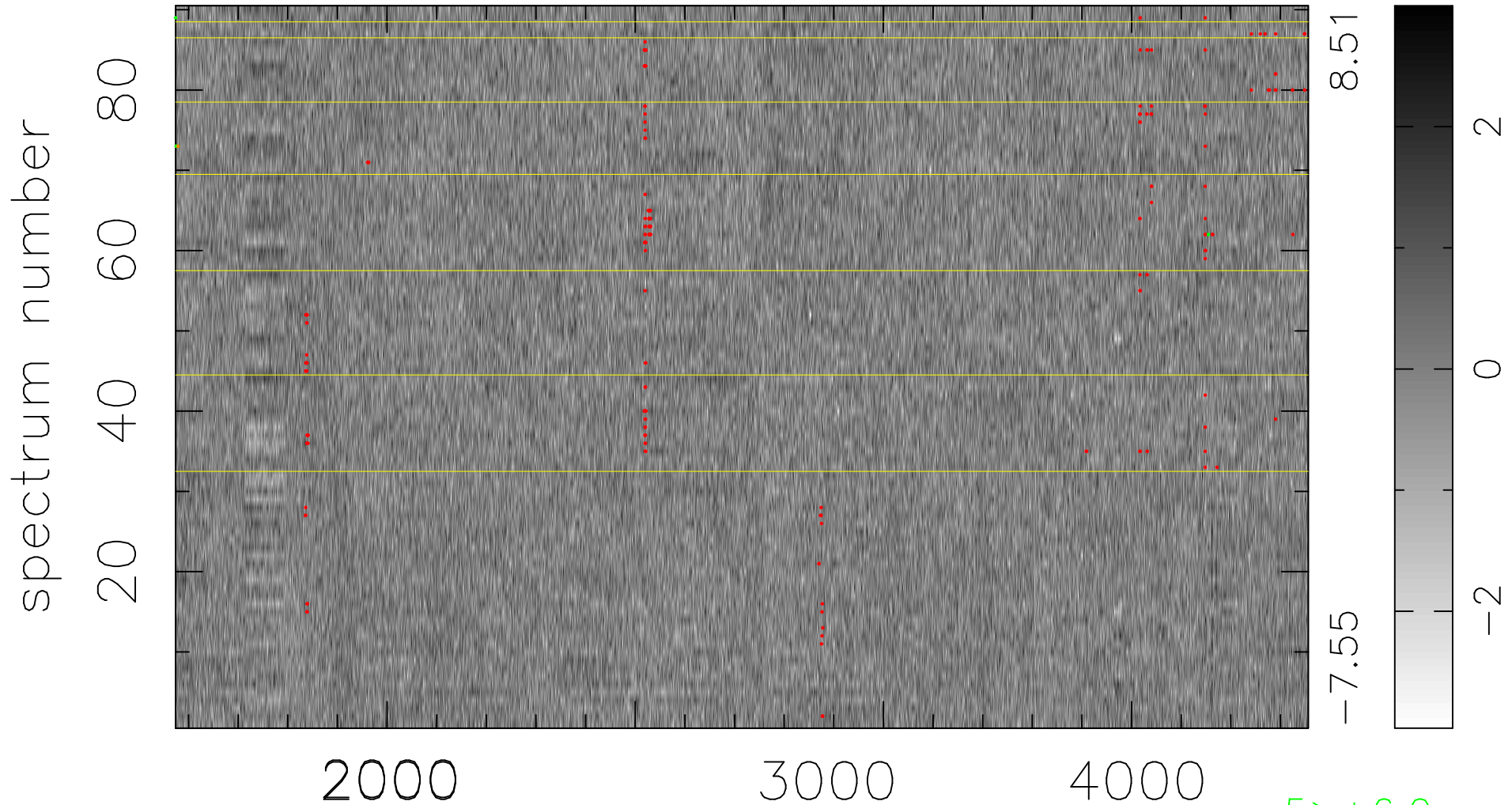


$$\chi(\lambda, t) = (\text{Data} - \text{Model } \text{AC}_5\text{B}_4\text{F}) / \sigma \chi$$

$$\chi^2 / (410850 - 5154) = 0.894 \Rightarrow 1.006$$

4565x90



bad:208=0.051% λ (Å) $z = 1.20042$

5 > +6.0 σ

2 < -6.0 σ