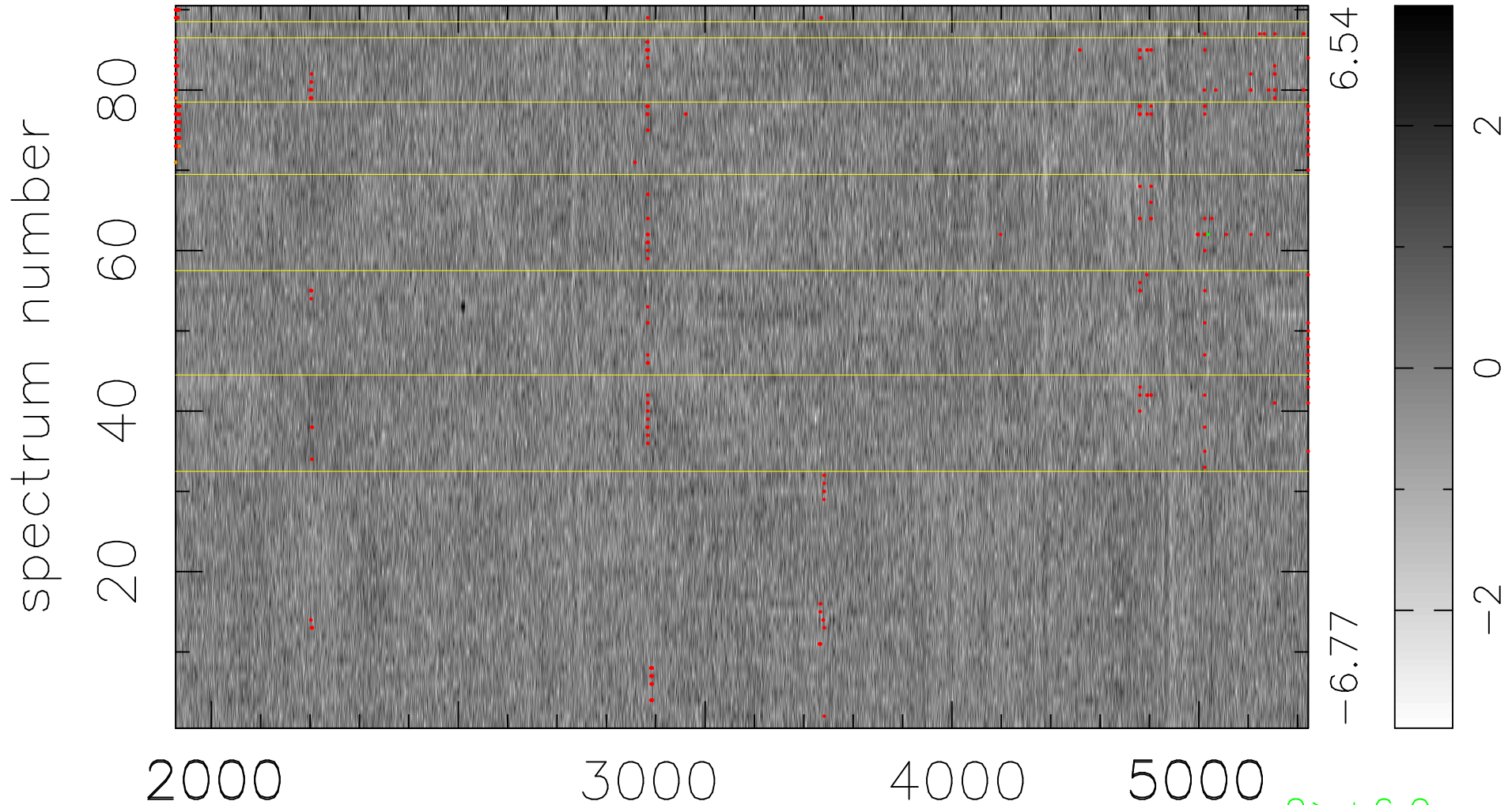


$$\chi(\lambda, t) = (\text{Data} - \text{Model } \text{AC}_5\text{B}_3\text{F}) / \sigma \chi$$

$$\chi^2 / (413010 - 5132) = 0.918 \Rightarrow 1.006$$

4589 × 90



bad:423=0.10%

λ (Å) $z = 0.86114$

2 > +6.0σ

3 < -6.0σ