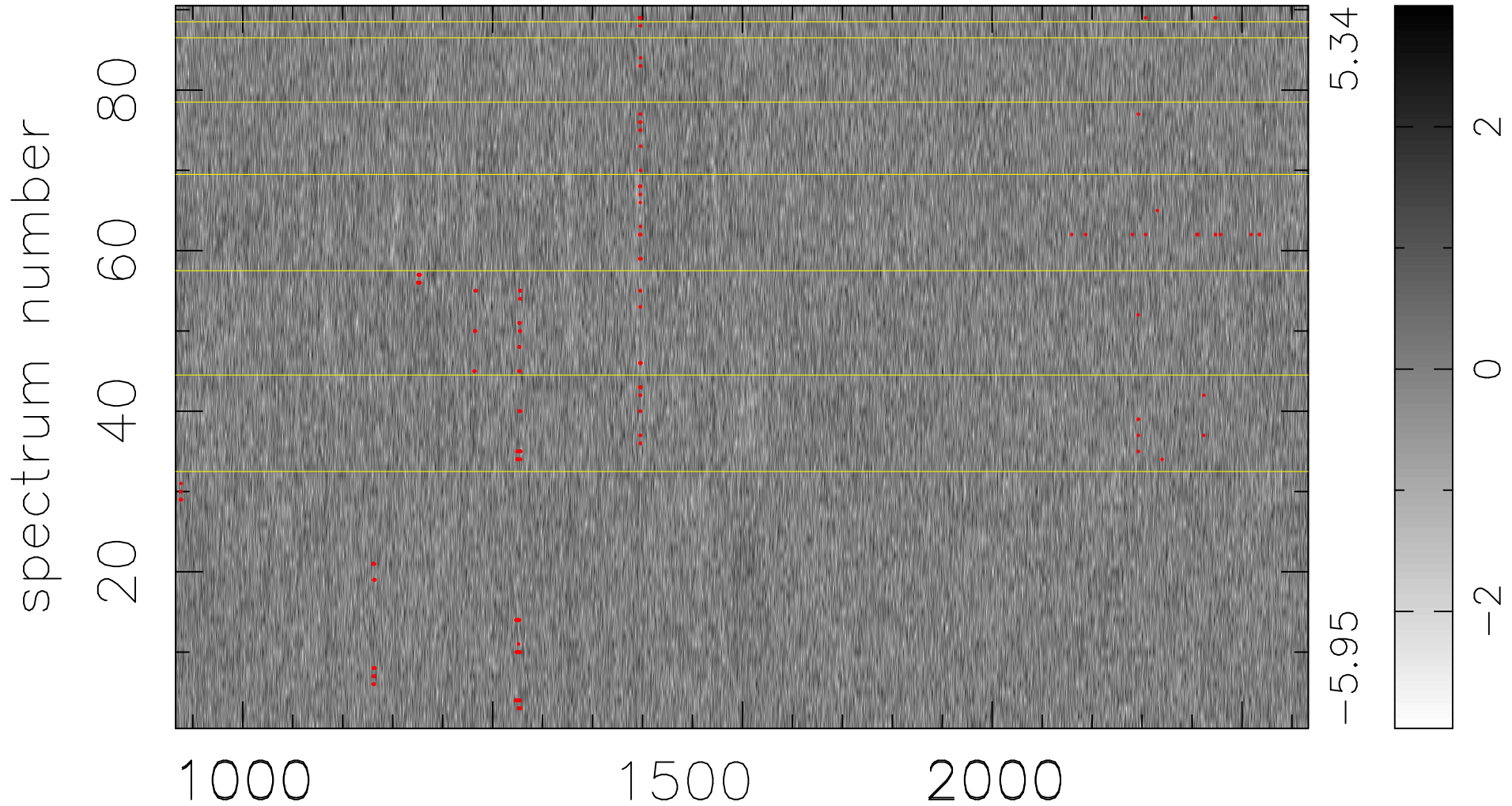


$$\chi(\lambda, t) = (\text{Data} - \text{Model } \text{AC}_5\text{B}_6\text{F}) / \sigma \chi$$

$$\chi^2 / (408150 - 5343) = 0.907 \Rightarrow 1.007$$

4535x90



bad:266=0.065% λ (Å) $z = 2.86718$