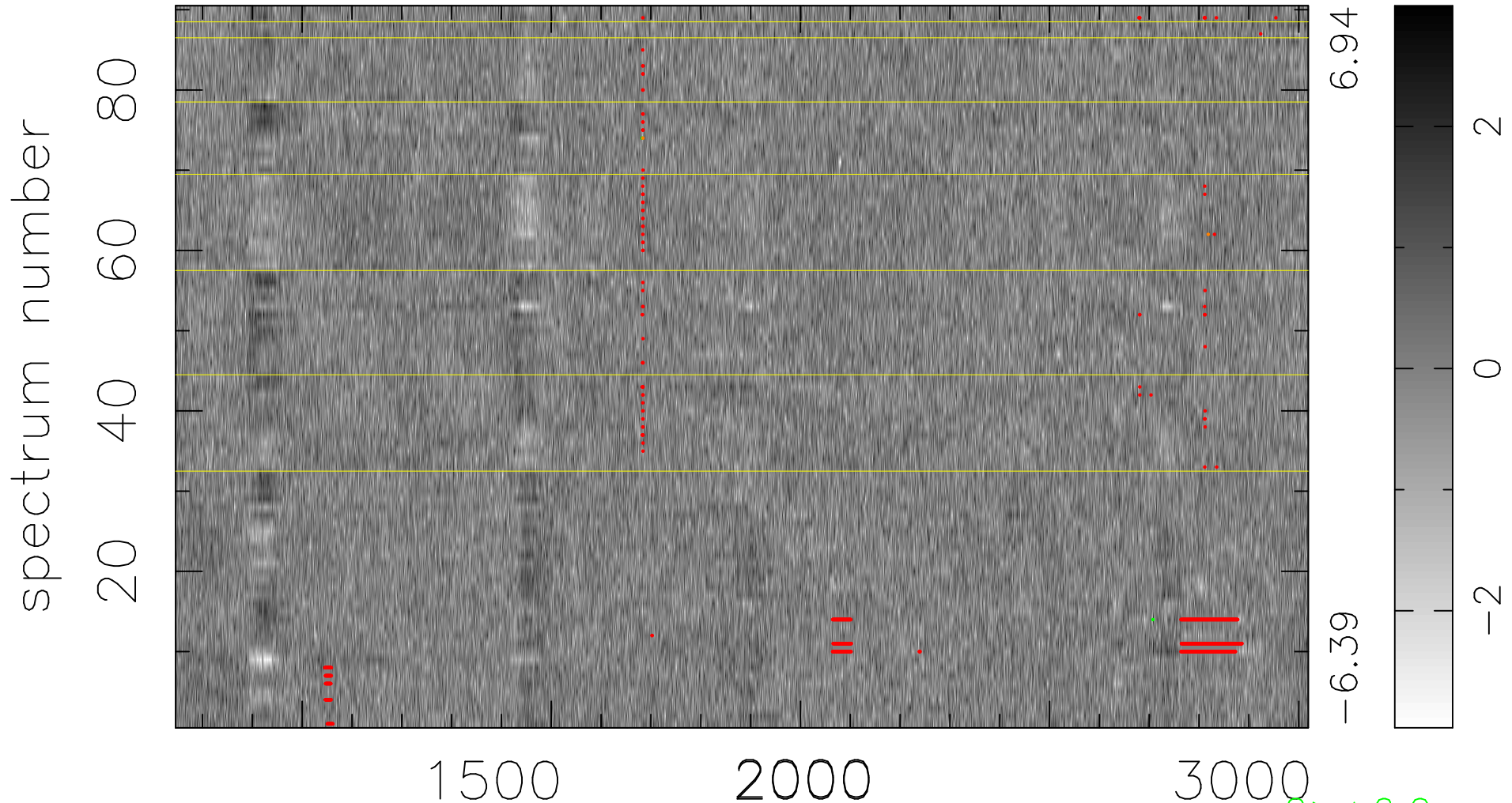


$$\chi(\lambda, t) = (\text{Data} - \text{Model AC}_5\text{F}) / \sigma \chi$$

$$\chi^2 / (409230 - 5307) = 0.932 \Rightarrow 1.007$$

4547x90



bad:1136=0.28% λ (Å) $z = 2.23432$

$2 > +6.0\sigma$

$2 < -6.0\sigma$