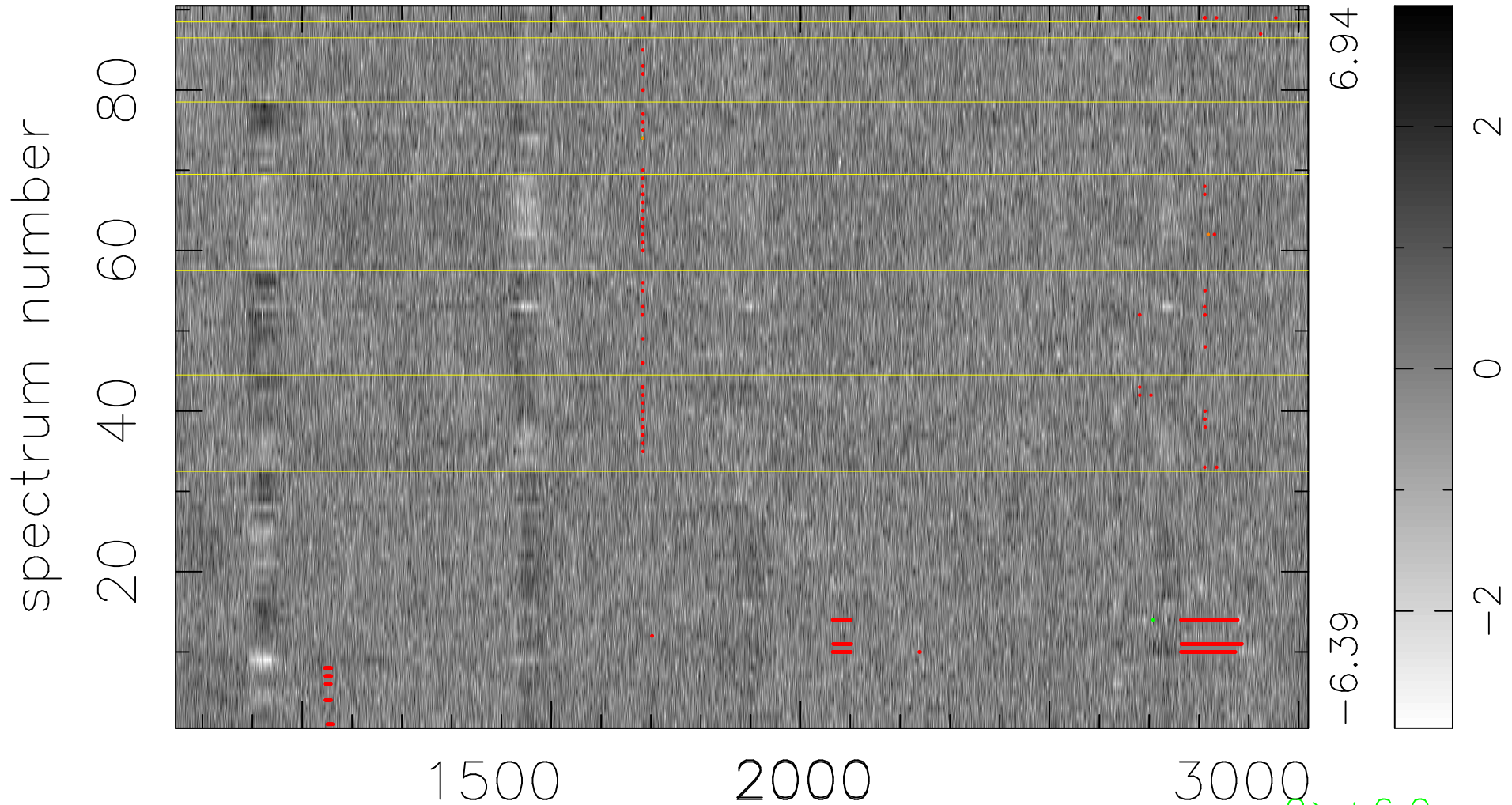


$$\chi(\lambda, t) = (\text{Data} - \text{Model } AC_5) / \sigma \chi$$

$$\chi^2 / (409230 - 5217) = 0.933 \Rightarrow 1.007$$

4547 × 90



6.94
-6.39

2
0
-2

$2 > +6.0\sigma$
 $2 < -6.0\sigma$

bad:1136=0.28% λ (\AA) $z = 2.23432$