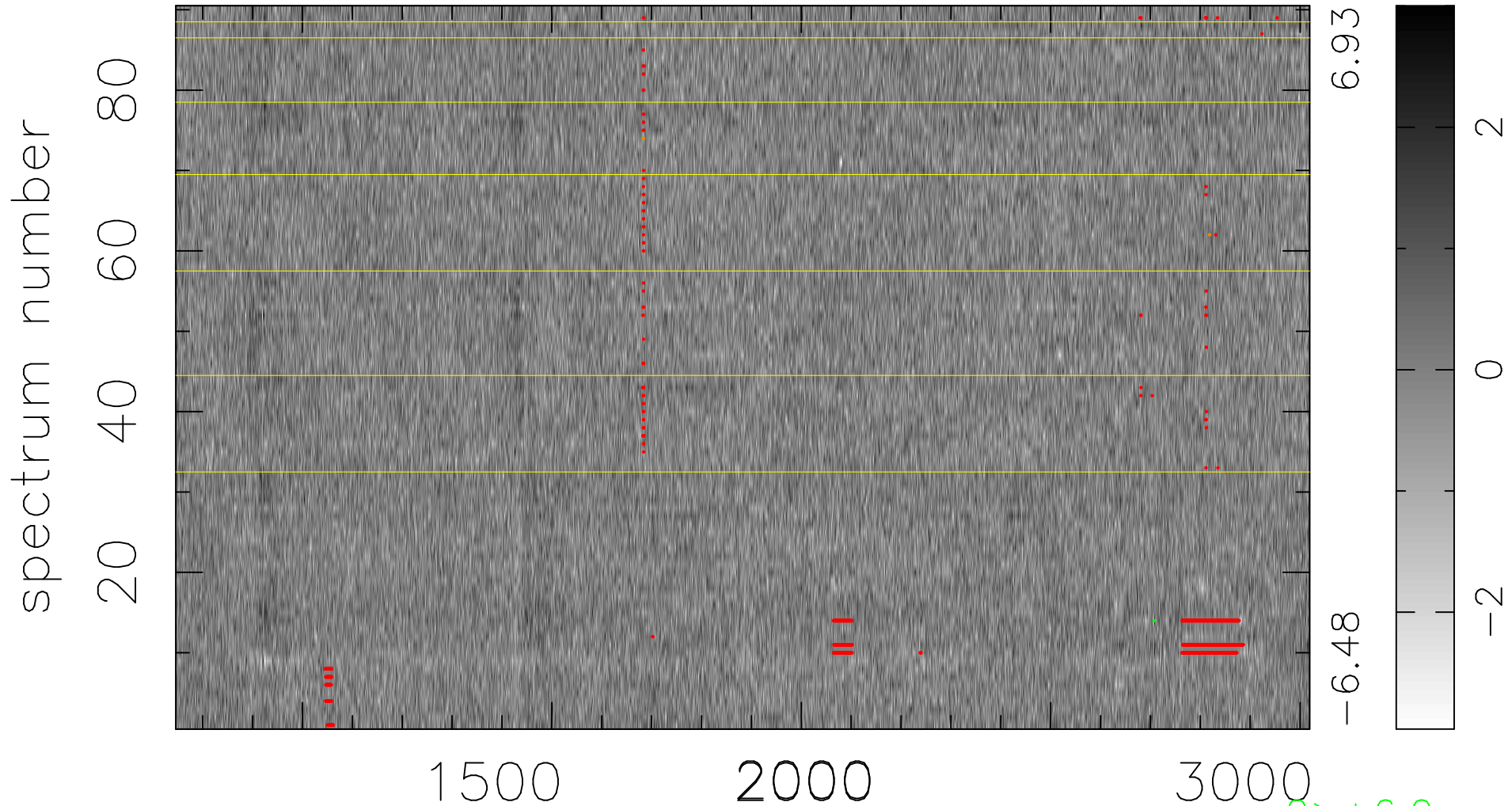


$$\chi(\lambda, t) = ( \text{Data} - \text{Model } \text{AC}_5\text{B}_7\text{F} ) / \sigma \chi$$

$$\chi^2 / (409230 - 5506) = 0.903 \Rightarrow 1.008$$

4547 × 90



6.93

-6.48

2

0

-2

2 > +6.0σ

2 < -6.0σ

bad:1136=0.28%    λ (Å)    z = 2.23432