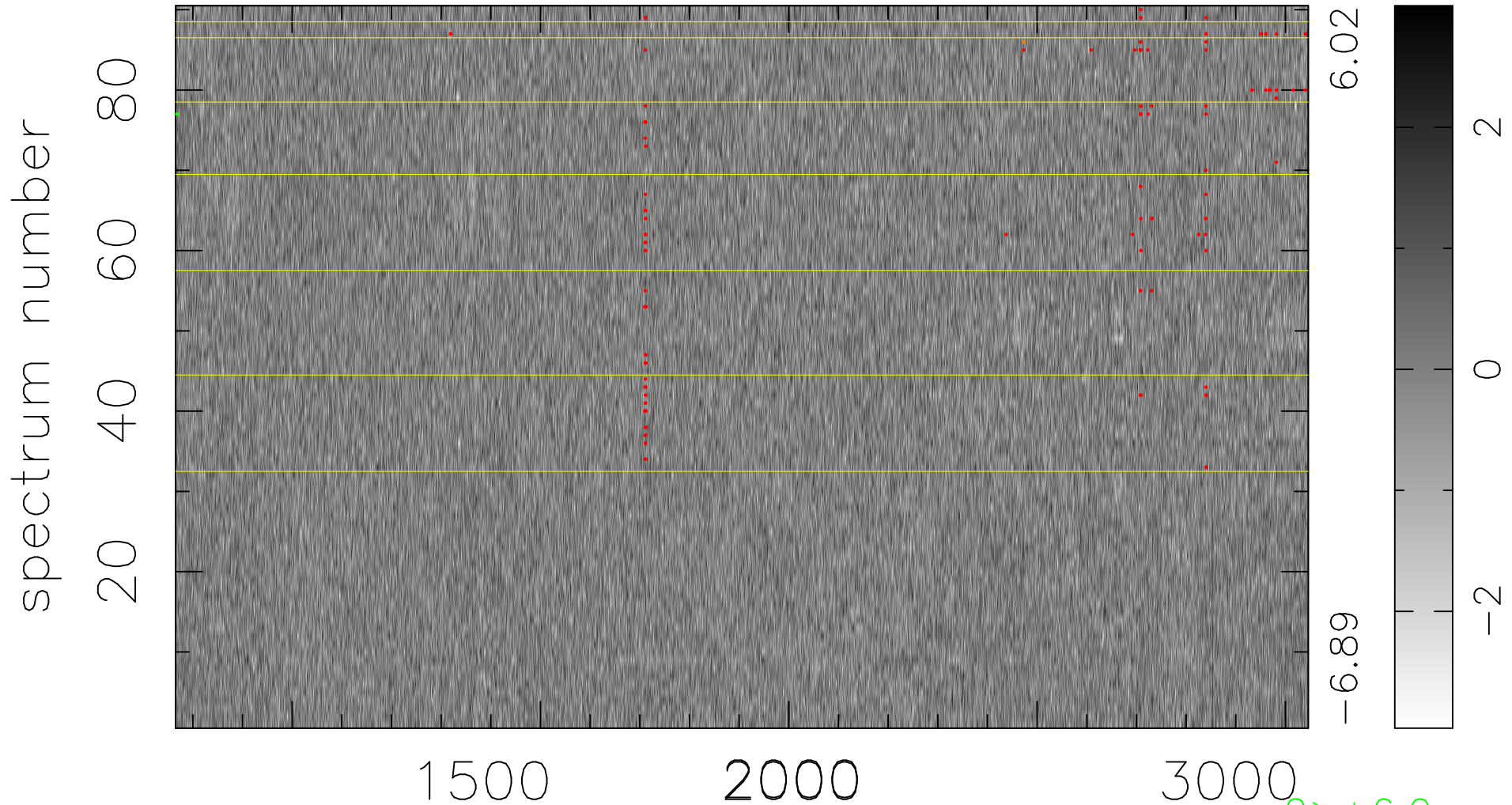


$$\chi(\lambda, t) = (\text{Data} - \text{Model AC}_5\text{B}_7\text{F}) / \sigma \chi$$

$$\chi^2 / (410580 - 5496) = 0.899 \Rightarrow 1.008$$

4562x90



bad:130=0.032% λ (Å) $z = 2.19304$

$2 > +6.0\sigma$
 $2 < -6.0\sigma$