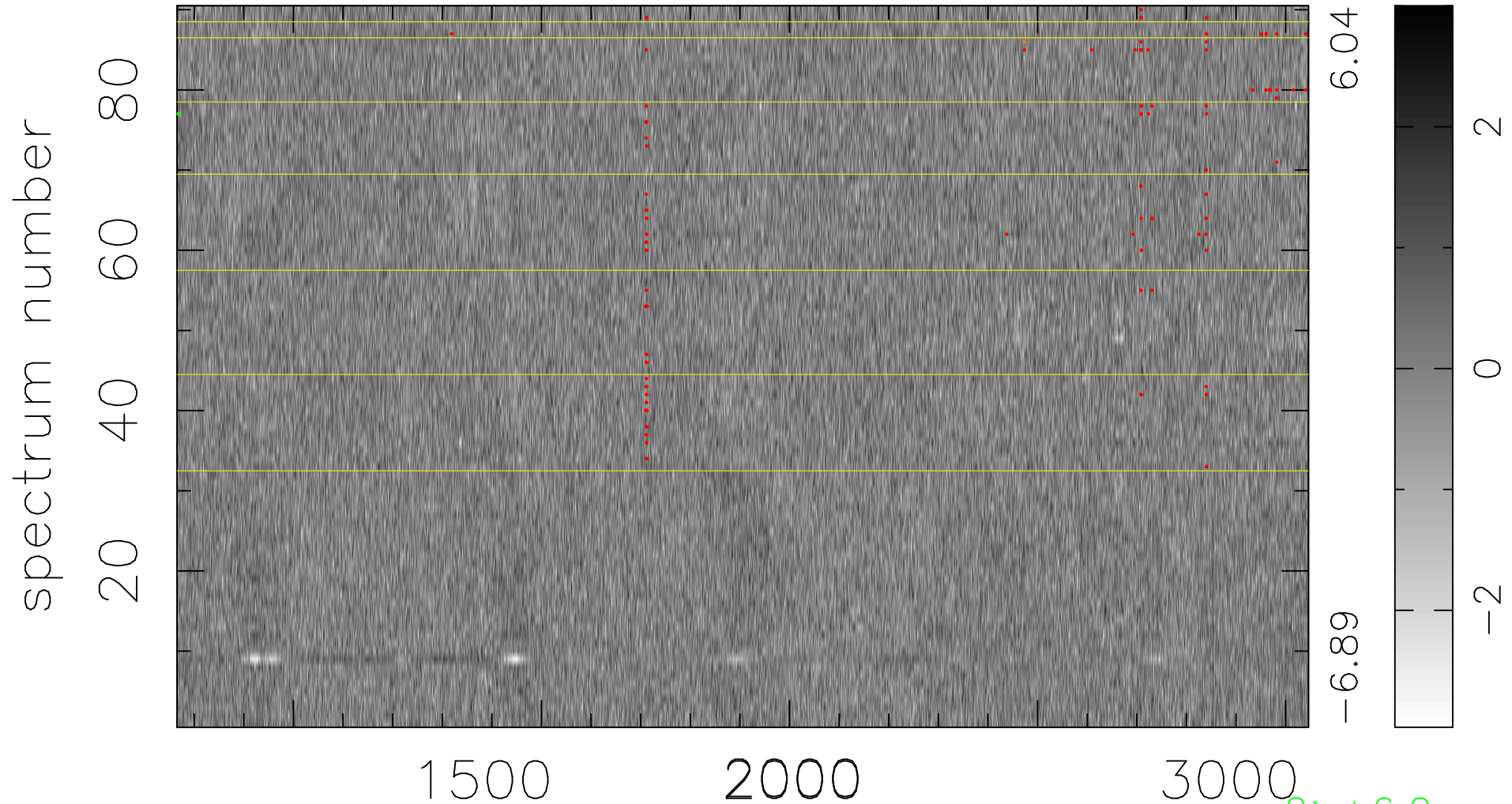


$$\chi(\lambda, t) = (\text{Data} - \text{Model AC}_5\text{F}) / \sigma \chi$$

$$\chi^2 / (410580 - 5321) = 0.908 \Rightarrow 1.007$$

4562x90



2 > +6.0σ

2 < -6.0σ

bad:130=0.032% λ (Å) z = 2.19304