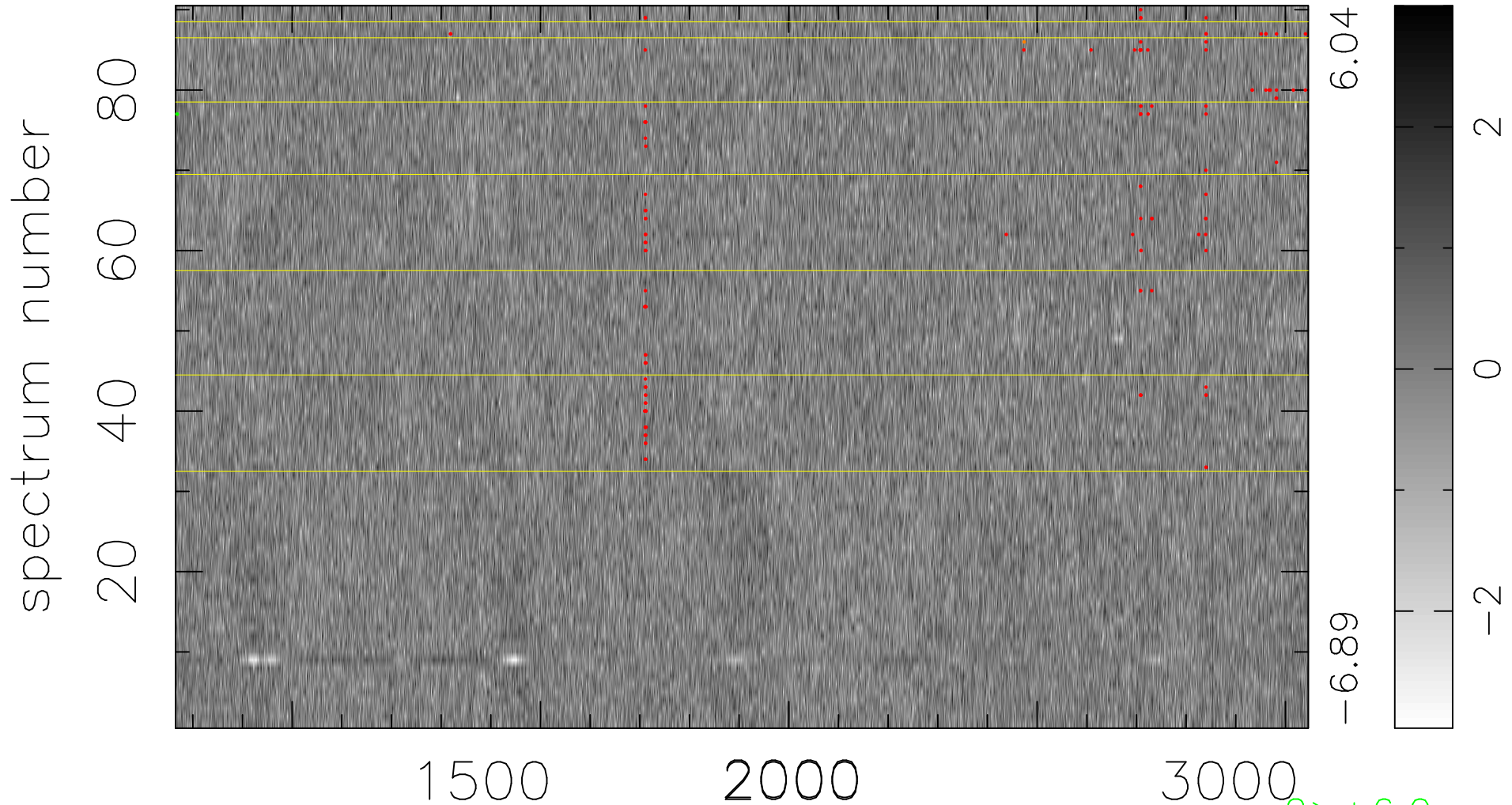


$$\chi(\lambda,t) = (\text{Data} - \text{Model } AC_5) / \sigma \chi$$

$$\chi^2 / (410580 - 5231) = 0.908 \Rightarrow 1.007$$

4562x90



bad:130=0.032% λ (Å) $z = 2.19304$

$2 > +6.0\sigma$
 $2 < -6.0\sigma$