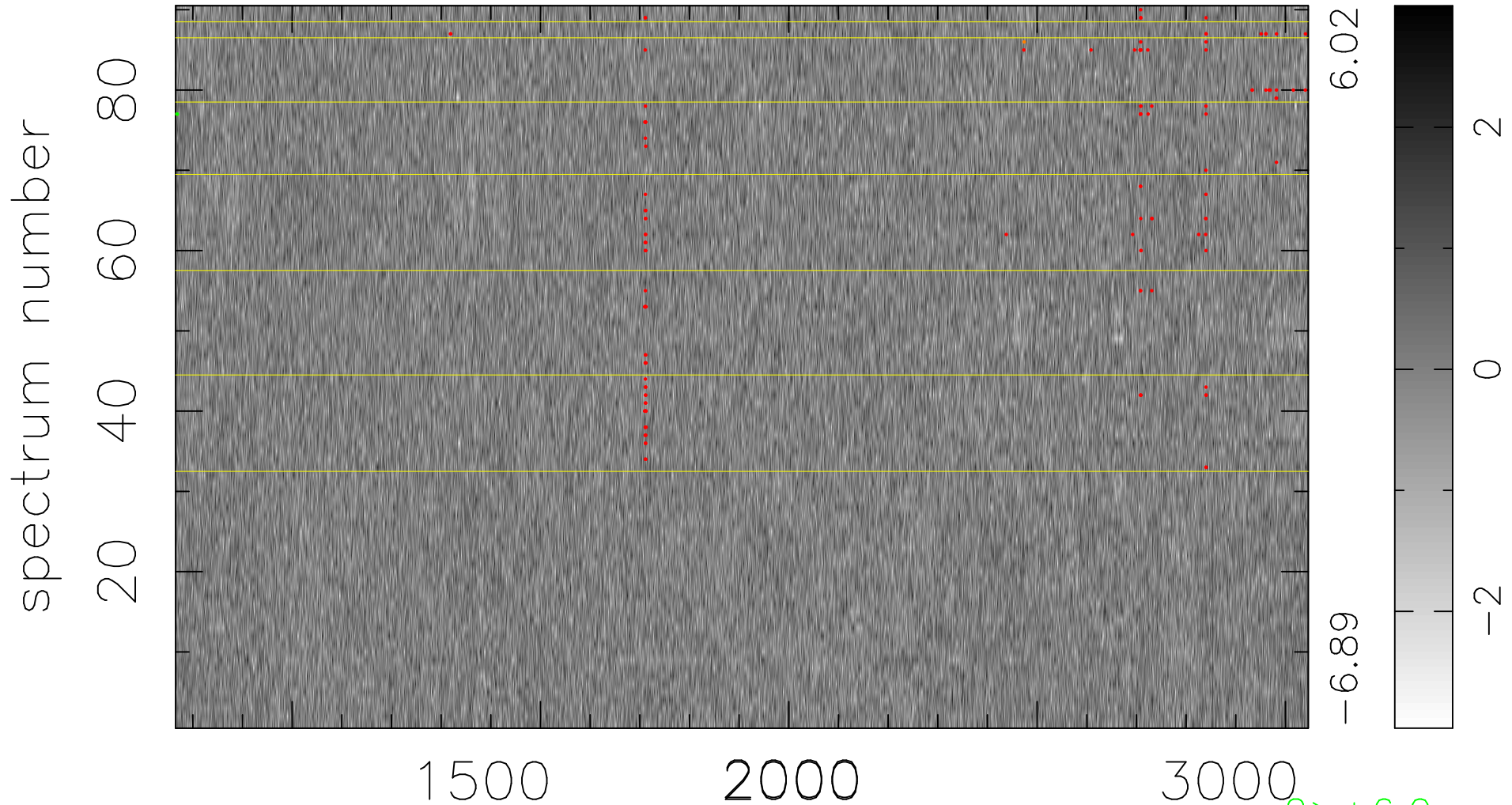


$$\chi(\lambda, t) = ( \text{Data} - \text{Model AC}_5\text{B}_7\text{F} ) / \sigma \chi$$

$$\chi^2 / (410580 - 5496) = 0.899 \Rightarrow 1.008$$

4562x90



2 > +6.0σ

2 < -6.0σ

bad:130=0.032%    λ (Å)    z = 2.19304