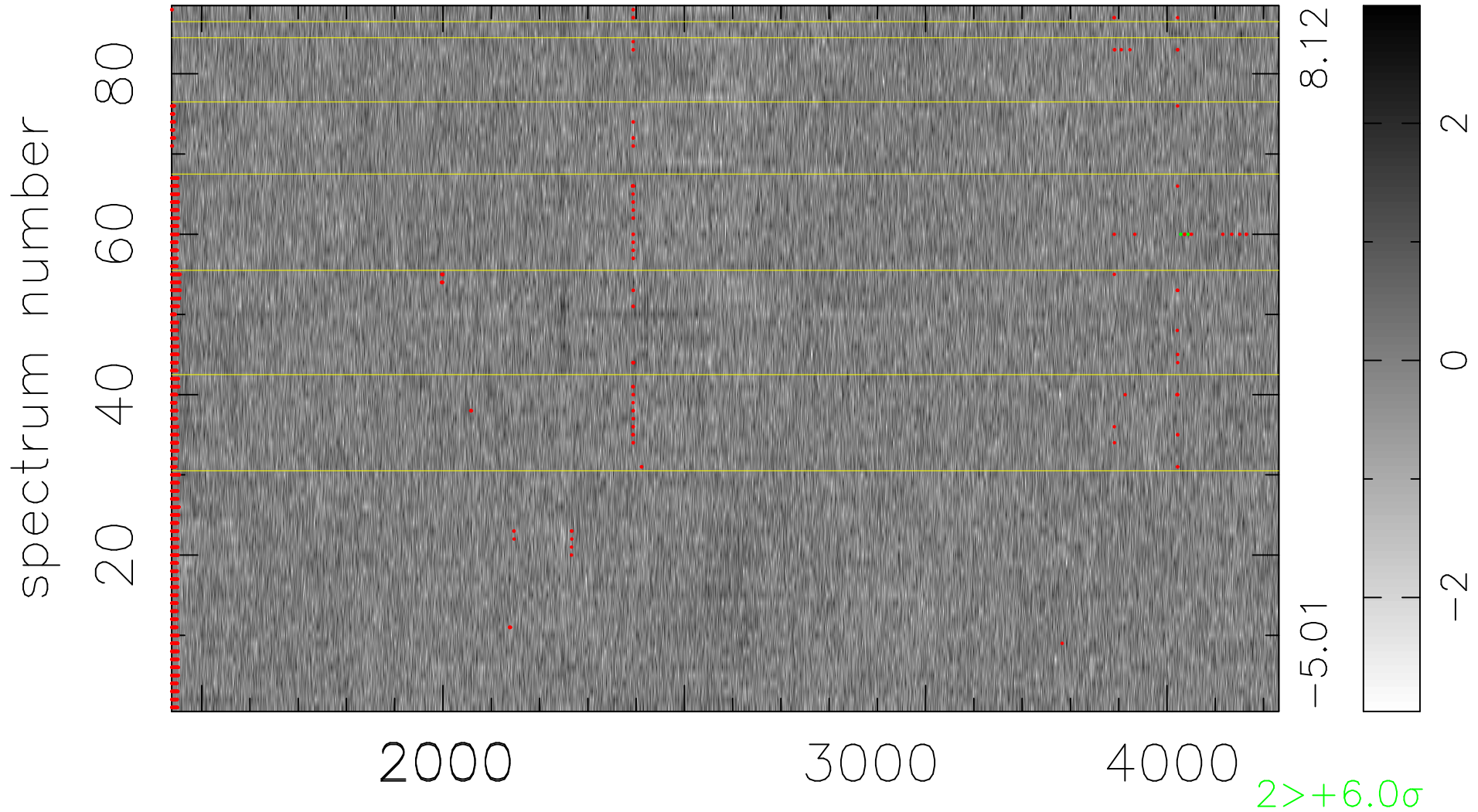


$$\chi(\lambda, t) = (\text{Data} - \text{Model } \text{AC}_5\text{B}_4\text{F}) / \sigma \chi$$

$$\chi^2 / (403832 - 5227) = 0.917 \Rightarrow 1.007$$

4589x88



bad:1926=0.48% λ (Å) $z = 1.33208$