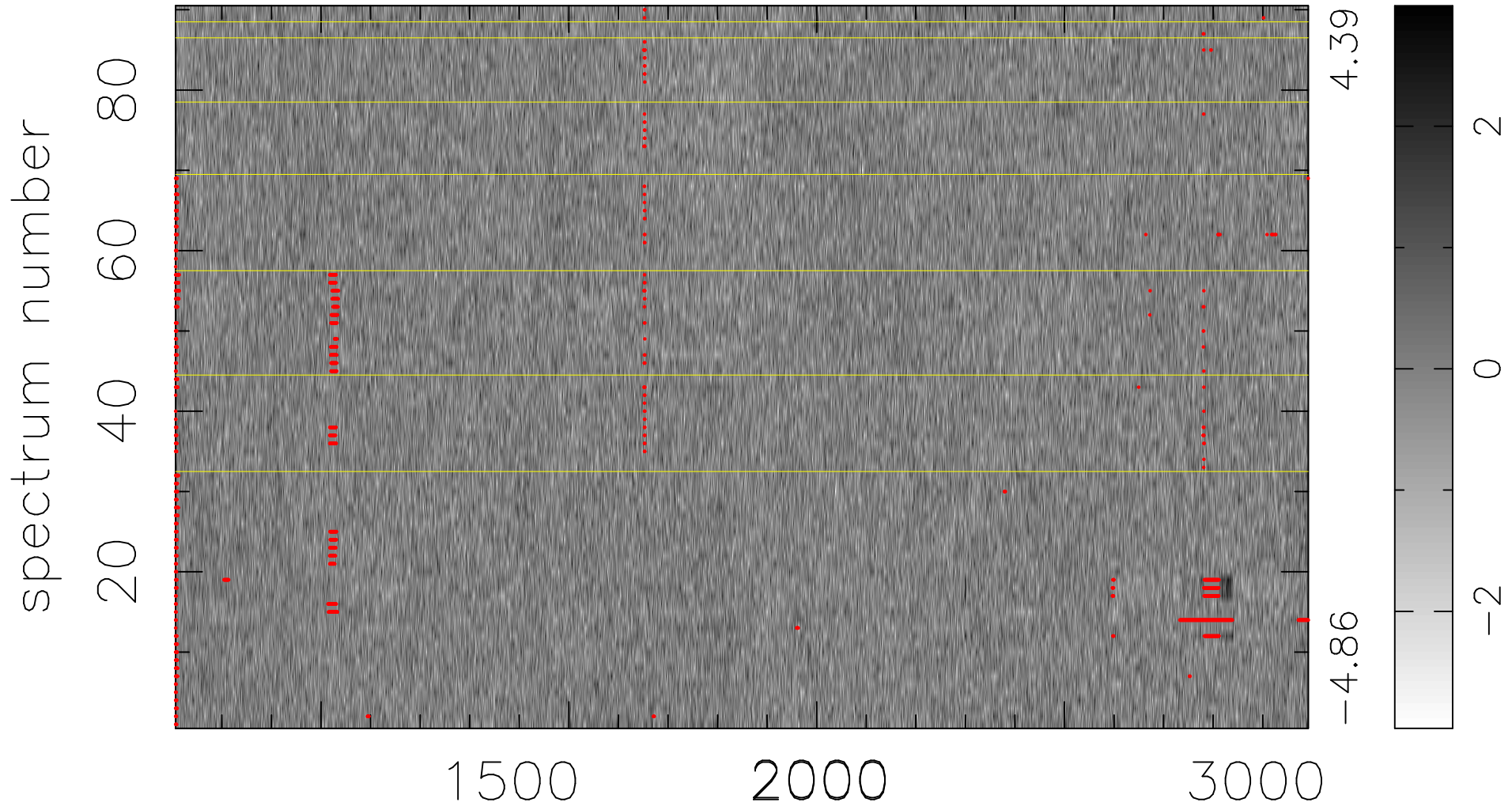


$$\chi(\lambda, t) = ( \text{Data} - \text{Model } \text{AC}_5\text{B}_7\text{F} ) / \sigma \chi$$

$$\chi^2 / (411390 - 5476) = 0.890 \Rightarrow 1.008$$

4571 × 90



bad:1635=0.40%  $\lambda$  (Å)  $z = 2.28062$