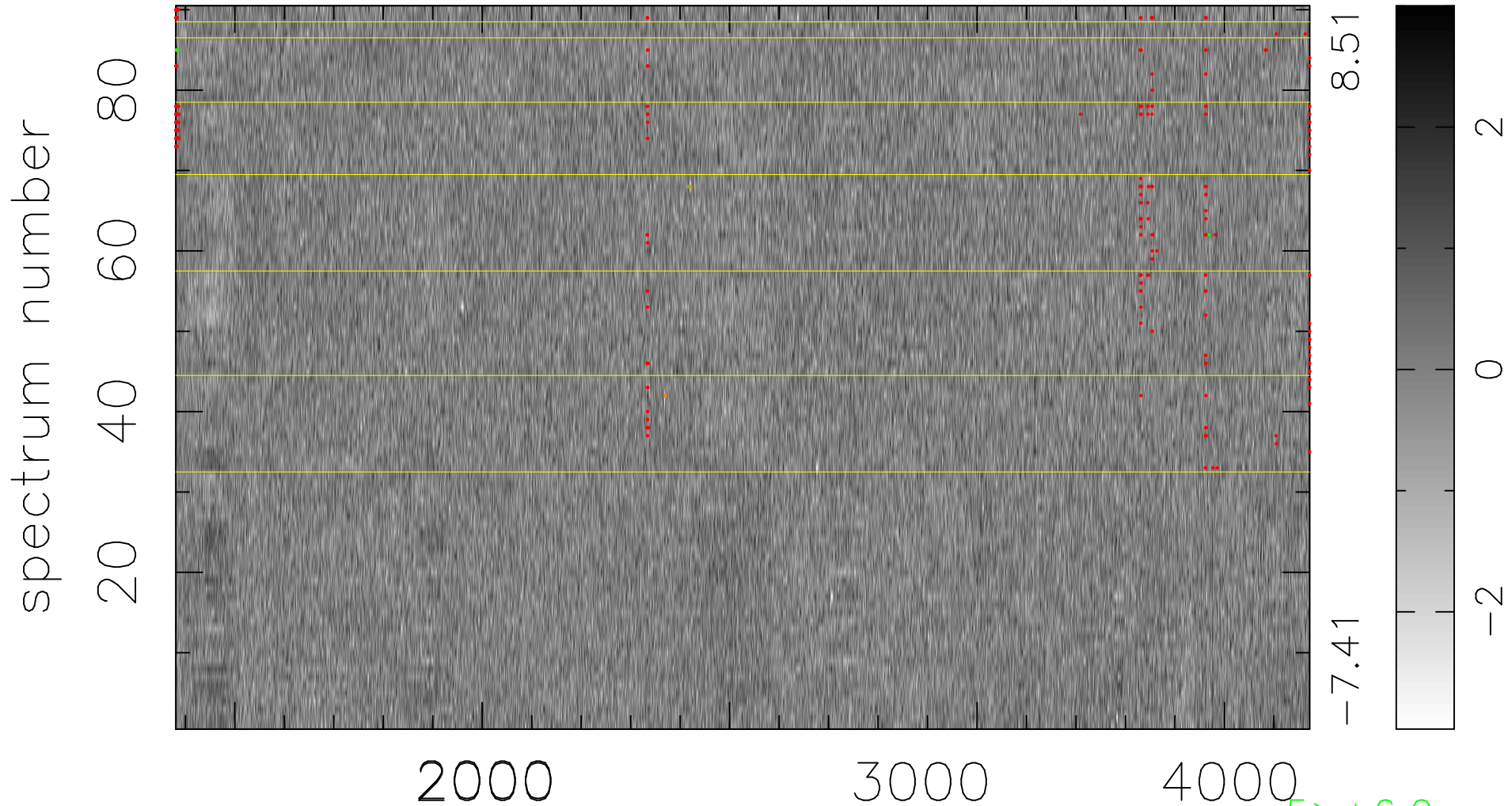


$$\chi(\lambda, t) = (\text{Data} - \text{Model AC}_5\text{F}) / \sigma \chi$$

$$\chi^2 / (412560 - 5052) = 0.912 \Rightarrow 1.008$$

4584x90



bad:261=0.063% λ (Å) $z = 1.39698$

5 > +6.0σ

6 < -6.0σ