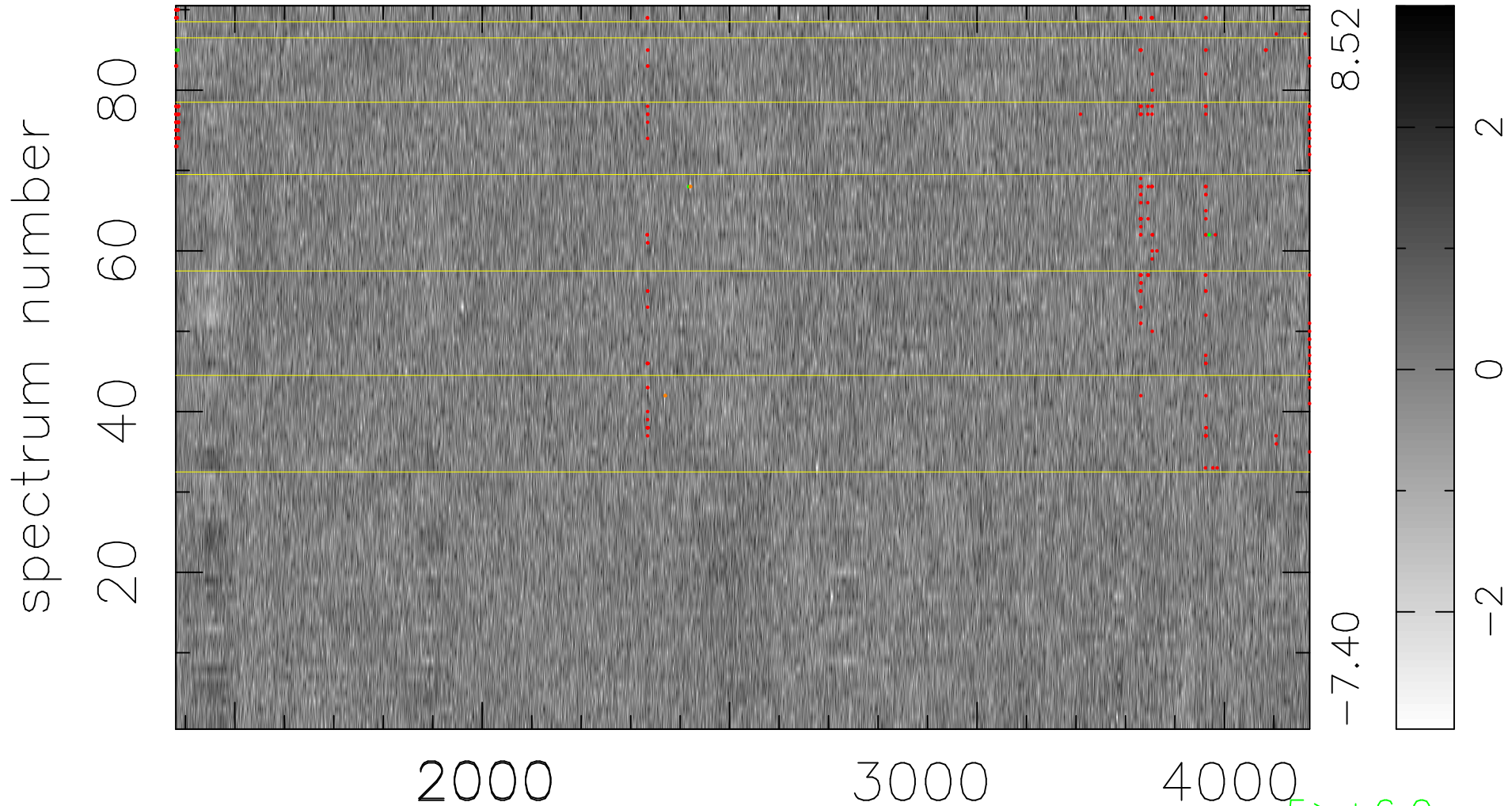


$$\chi(\lambda, t) = ( \text{Data} - \text{Model } AC_5 ) / \sigma \chi$$

$$\chi^2 / (412560 - 4962) = 0.913 \Rightarrow 1.007$$

4584x90



bad:261=0.063%  $\lambda$  (Å)  $z = 1.39698$

5 > +6.0σ

6 < -6.0σ