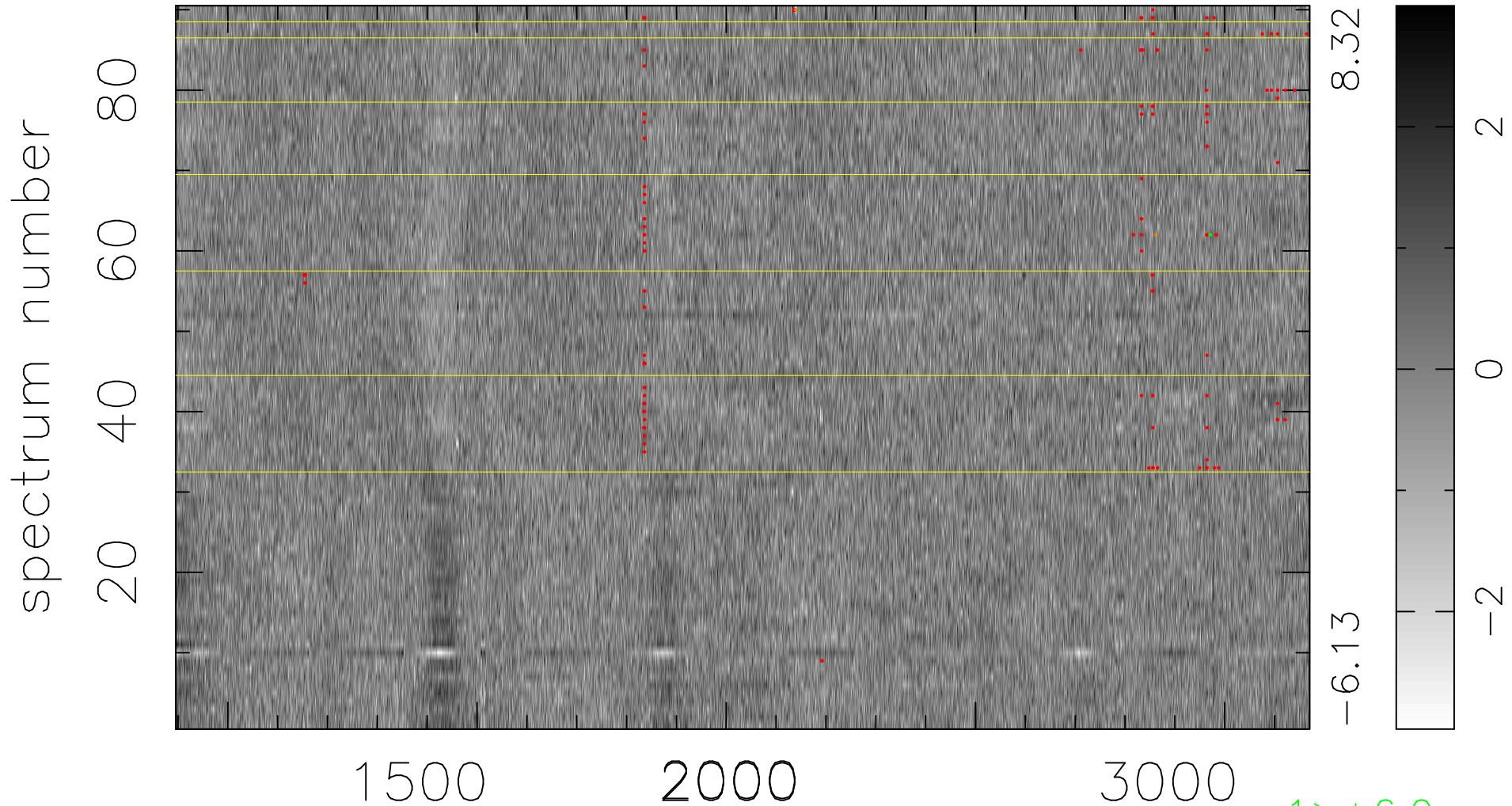


$$\chi(\lambda, t) = (\text{Data} - \text{Model } AC_5) / \sigma \chi$$

$$\chi^2 / (409500 - 5212) = 0.924 \Rightarrow 1.007$$

4550x90



bad:155=0.038% λ (Å) $z = 2.01549$

1 > +6.0σ

2 < -6.0σ