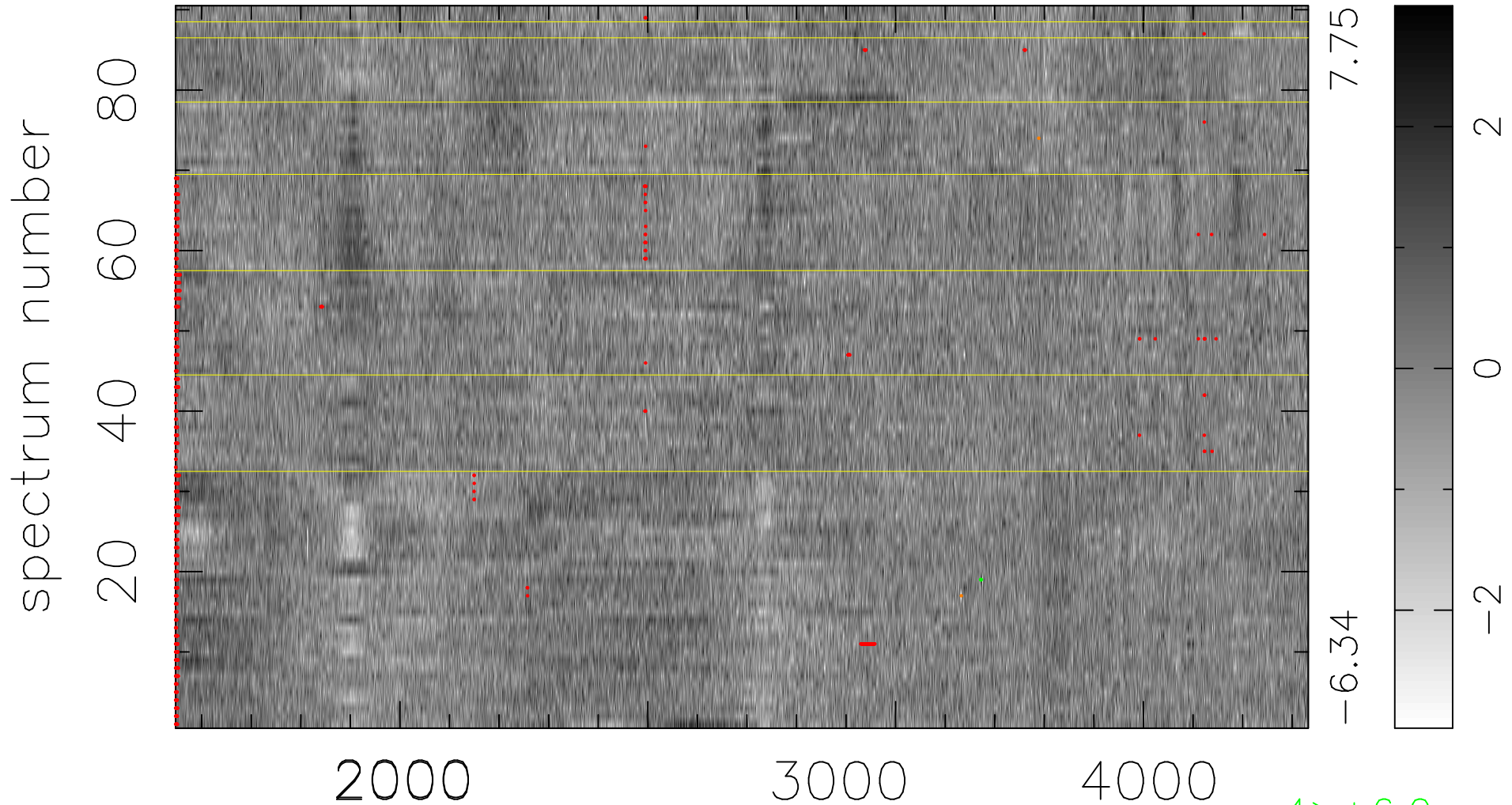


$$\chi(\lambda, t) = ( \text{Data} - \text{Model AC}_5\text{F} ) / \sigma \chi$$

$$\chi^2 / (411390 - 4952) = 0.962 \Rightarrow 1.009$$

4571 × 90



bad:759=0.18%

$\lambda$  (Å)  $z = 1.22592$

4 > +6.0σ

2 < -6.0σ