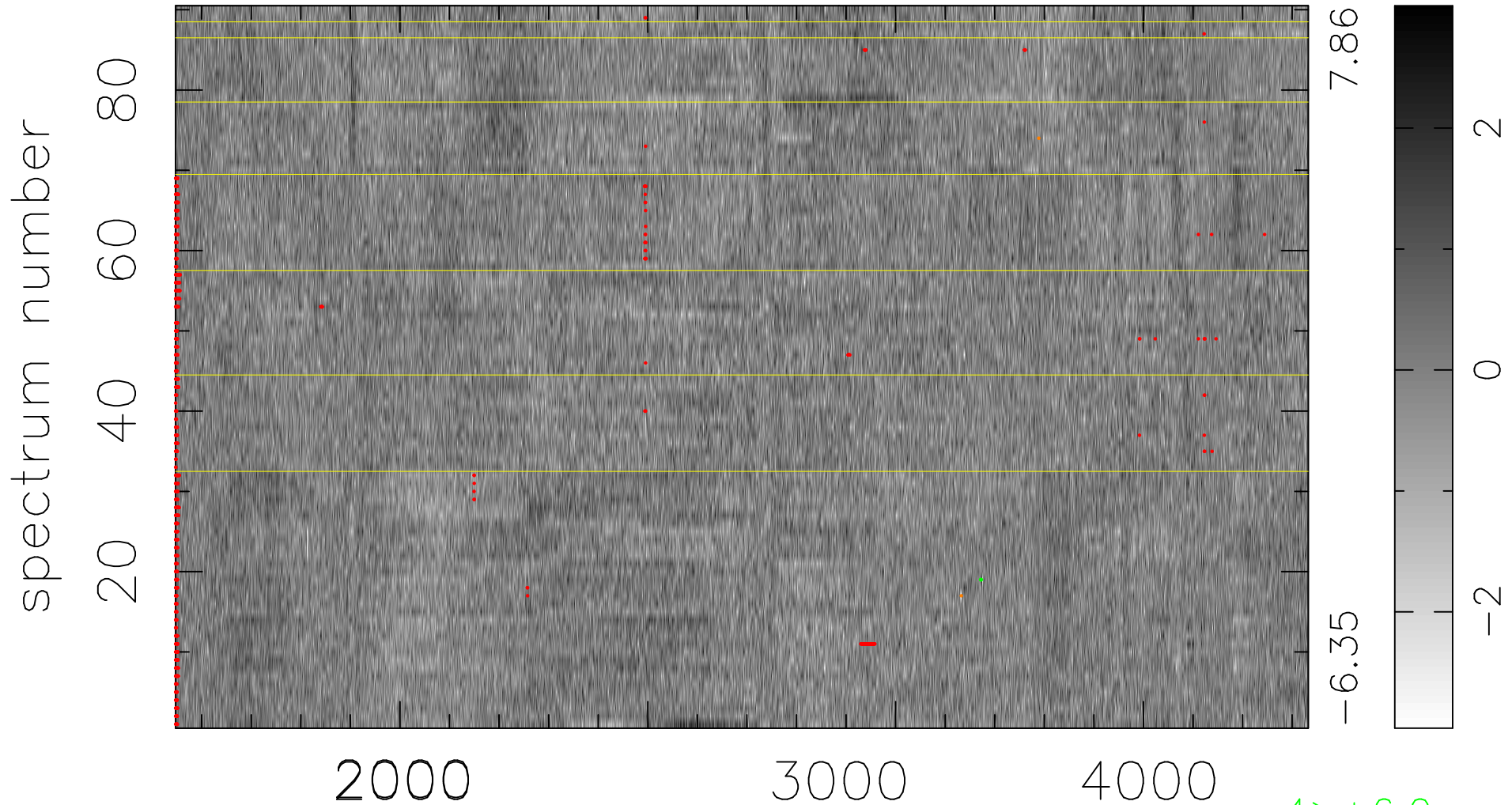


$$\chi(\lambda, t) = (\text{Data} - \text{Model } \text{AC}_5\text{B}_3\text{F}) / \sigma \chi$$

$$\chi^2 / (411390 - 5118) = 0.925 \Rightarrow 1.009$$

4571 × 90



7.86

-6.35

2

0

-2

4 > +6.0σ

2 < -6.0σ

bad:759=0.18%

λ (Å) z = 1.22592