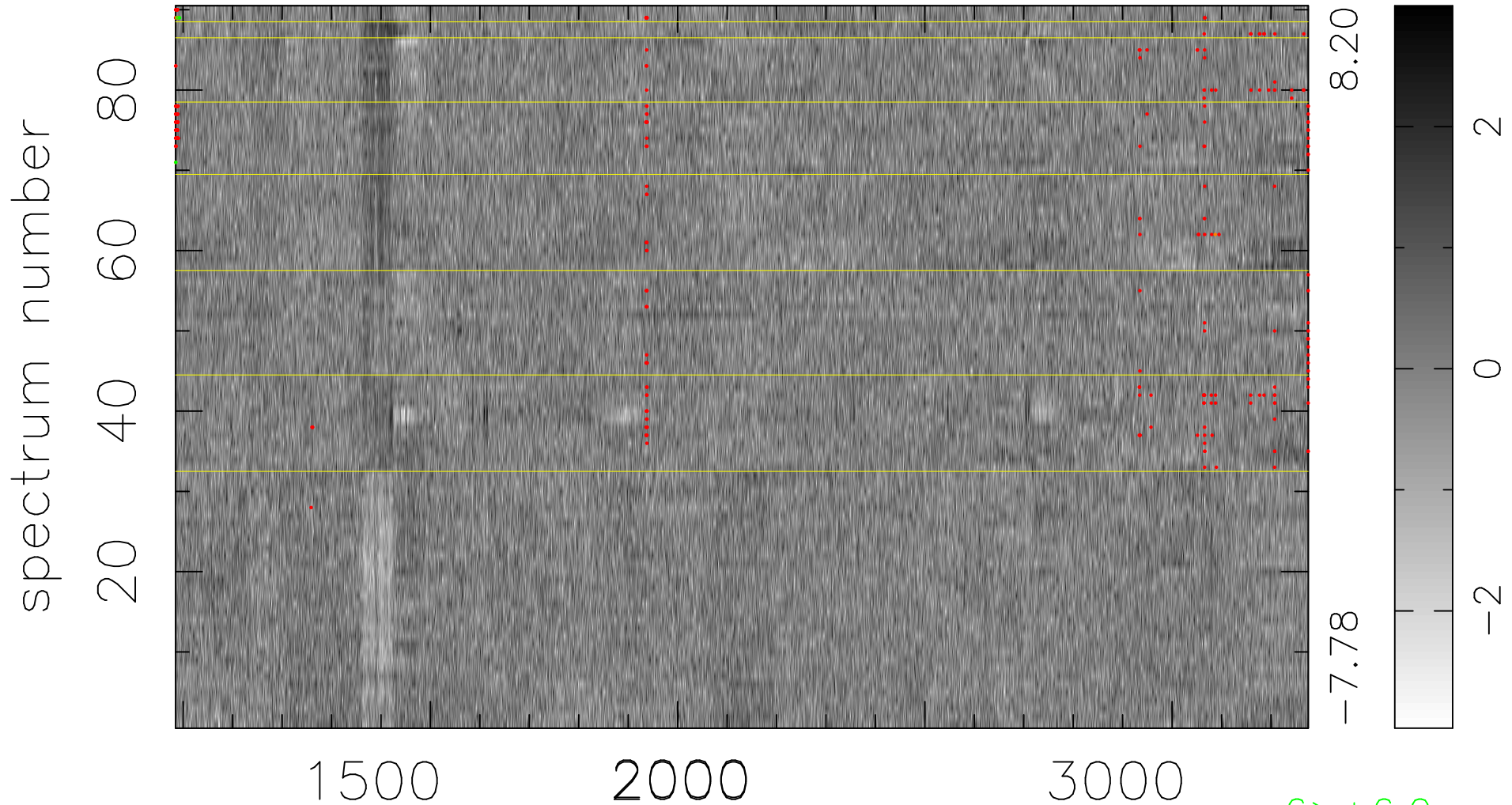


$$\chi(\lambda, t) = (\text{Data} - \text{Model AC}_5\text{F}) / \sigma \chi$$

$$\chi^2 / (412380 - 5147) = 0.977 \Rightarrow 1.007$$

4582x90



bad:268=0.065% λ (Å) $z = 1.87770$

6 > +6.0 σ

6 < -6.0 σ