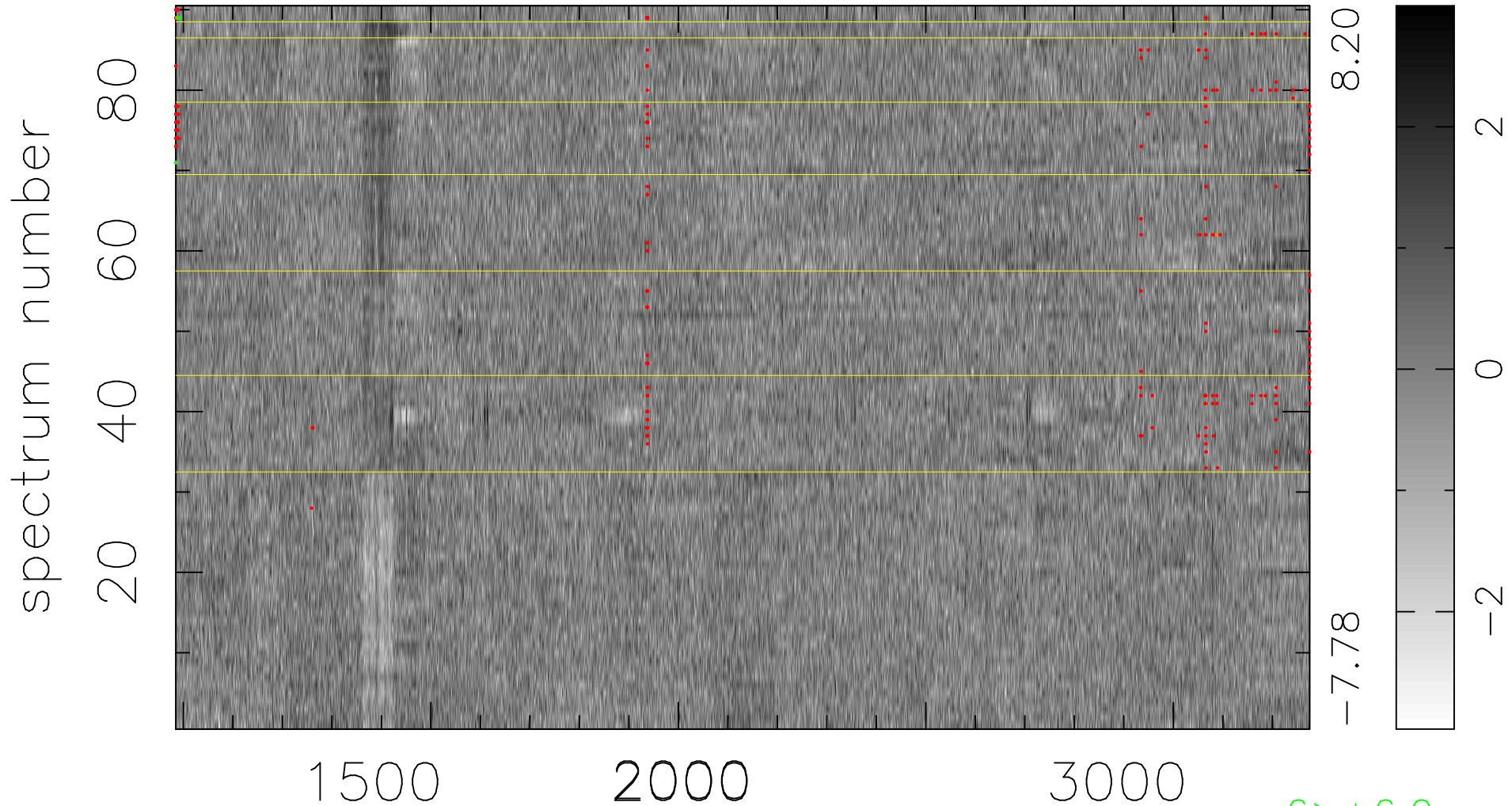


$$\chi(\lambda,t) = (\text{Data} - \text{Model } AC_5) / \sigma \chi$$

$$\chi^2 / (412380 - 5057) = 0.977 \Rightarrow 1.007$$

4582x90



bad:268=0.065% λ (Å) $z = 1.87770$

6 > +6.0σ

6 < -6.0σ