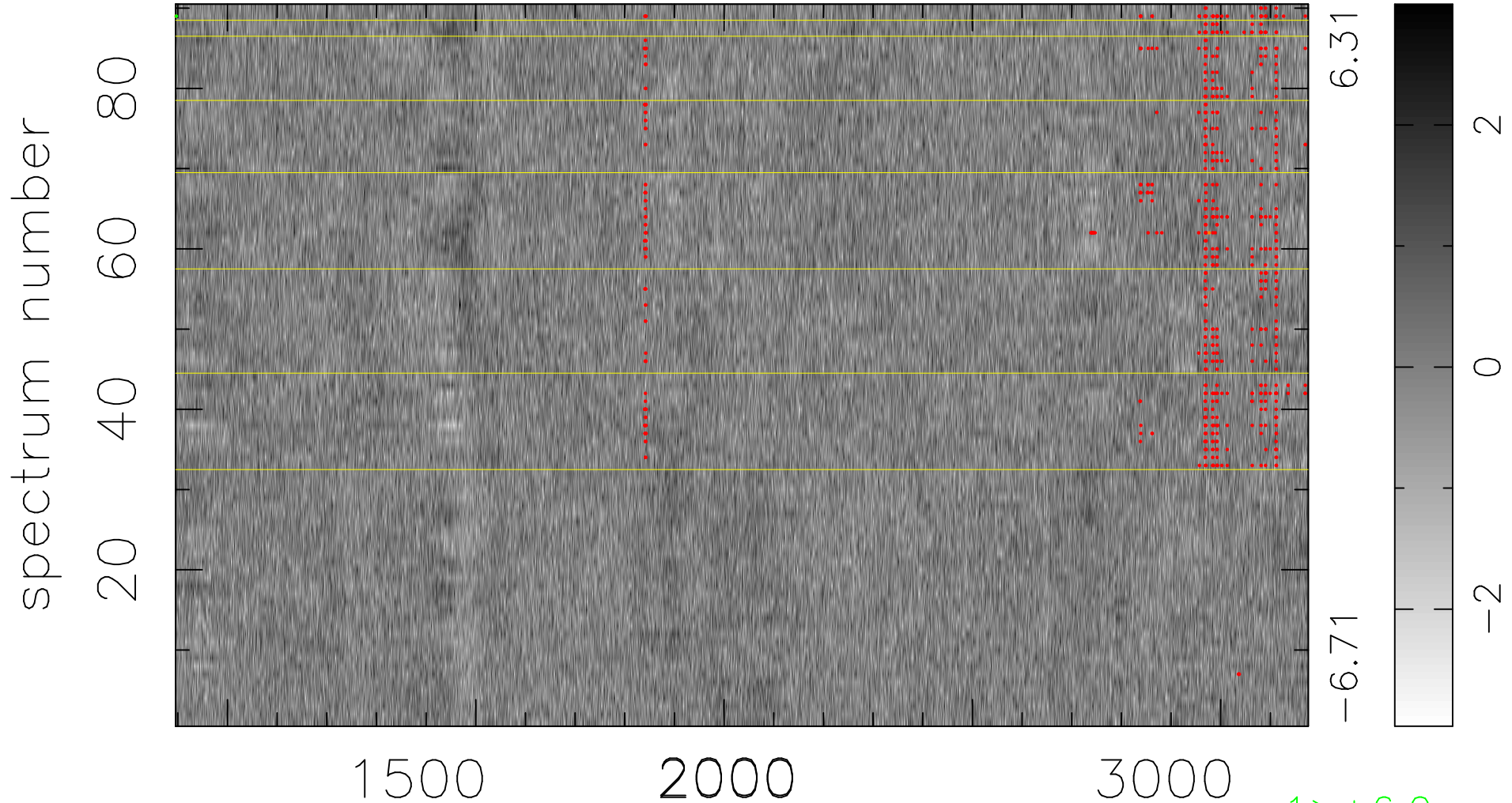


$$\chi(\lambda,t) = (\text{Data} - \text{Model } AC_5) / \sigma \chi$$

$$\chi^2 / (410580 - 5224) = 0.910 \Rightarrow 1.007$$

4562x90



bad:652=0.16%

λ (Å) $z = 2.00705$

1 > +6.0 σ

2 < -6.0 σ