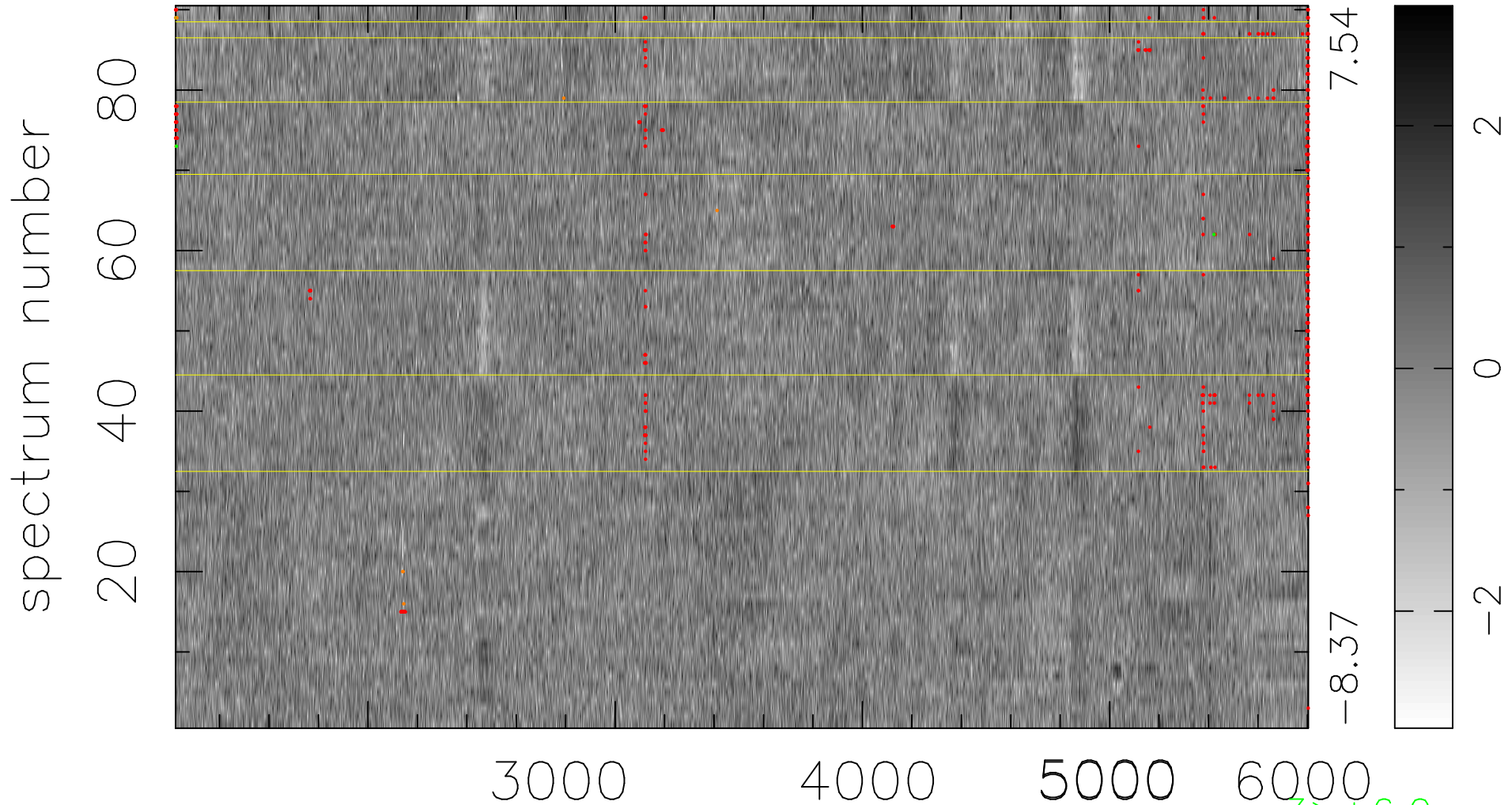


$$\chi(\lambda, t) = ( \text{Data} - \text{Model AC}_5\text{F} ) / \sigma \chi$$

$$\chi^2 / (412380 - 4969) = 1.003 \Rightarrow 1.005$$

4582x90



7.54

-8.37

3 > +6.0σ

8 < -6.0σ

bad:522=0.13%

λ (Å) z = 0.71507