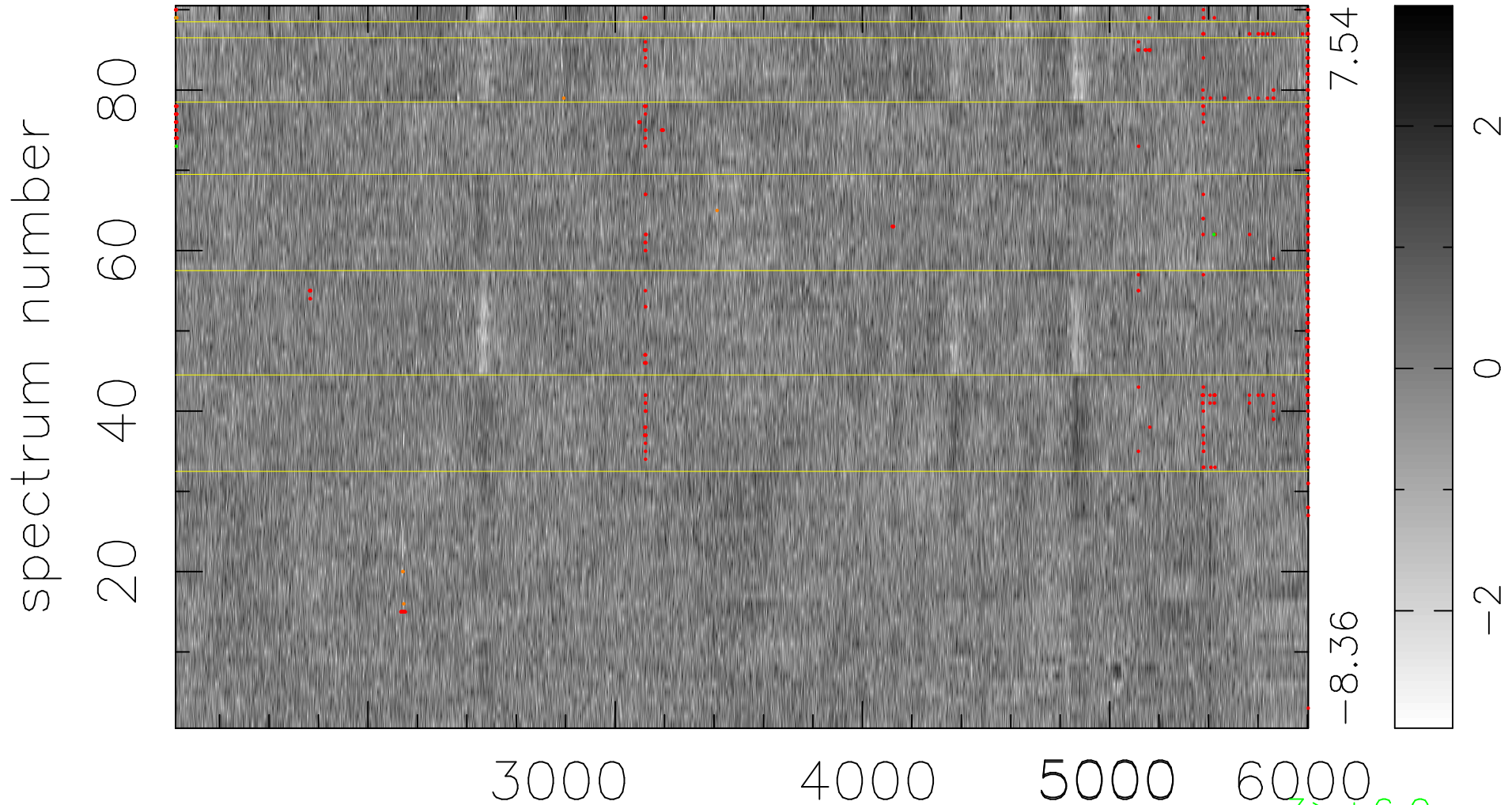


$$\chi(\lambda, t) = (\text{Data} - \text{Model } AC_5) / \sigma \chi$$

$$\chi^2 / (412380 - 4879) = 1.005 \Rightarrow 1.006$$

4582x90



bad:522=0.13%

λ (Å) $z = 0.71507$

3 > +6.0σ

8 < -6.0σ