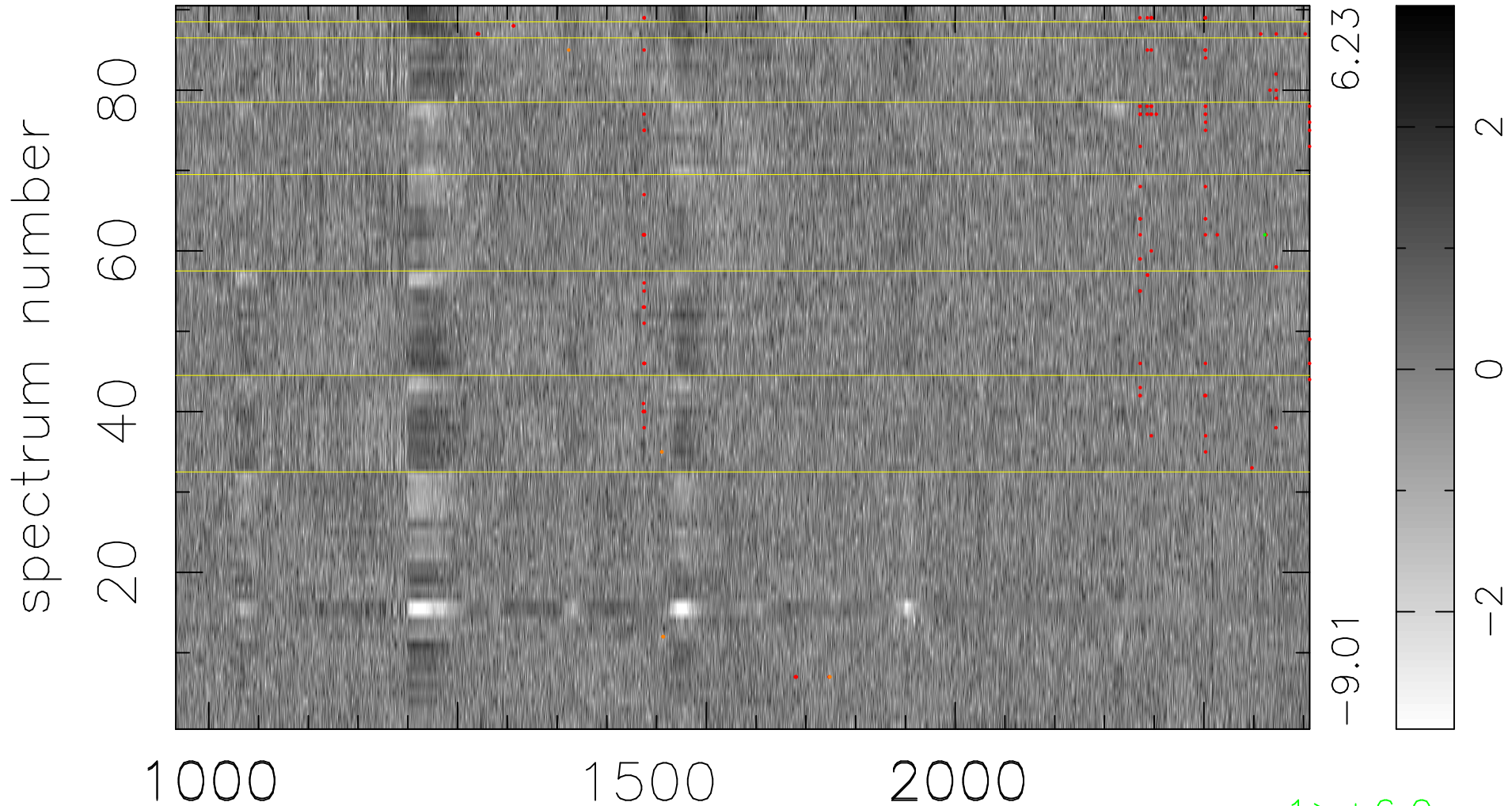


$$\chi(\lambda,t) = (\text{Data} - \text{Model } AC_5) / \sigma \chi$$

$$\chi^2 / (410220 - 5138) = 1.131 \Rightarrow 1.007$$

4558x90



bad:127=0.031% λ (Å) $z = 2.72861$

1 > +6.0σ

8 < -6.0σ