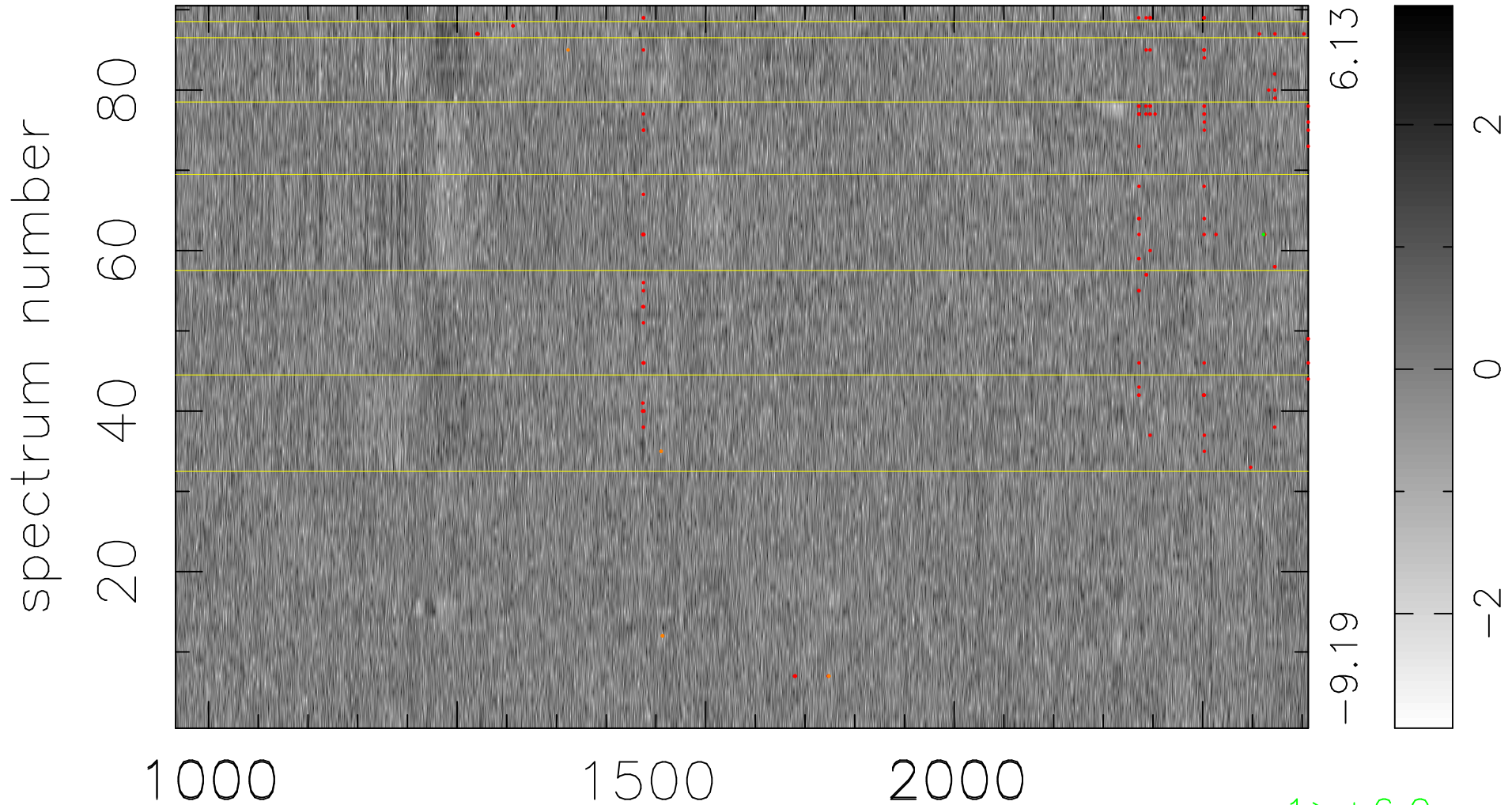


$$\chi(\lambda, t) = ( \text{Data} - \text{Model } \text{AC}_5\text{B}_6\text{F} ) / \sigma \chi$$

$$\chi^2 / (410220 - 5368) = 0.904 \Rightarrow 0.997$$

4558x90



bad:127=0.031%  $\lambda$  (Å)  $z = 2.72861$

1 > +6.0 $\sigma$

8 < -6.0 $\sigma$