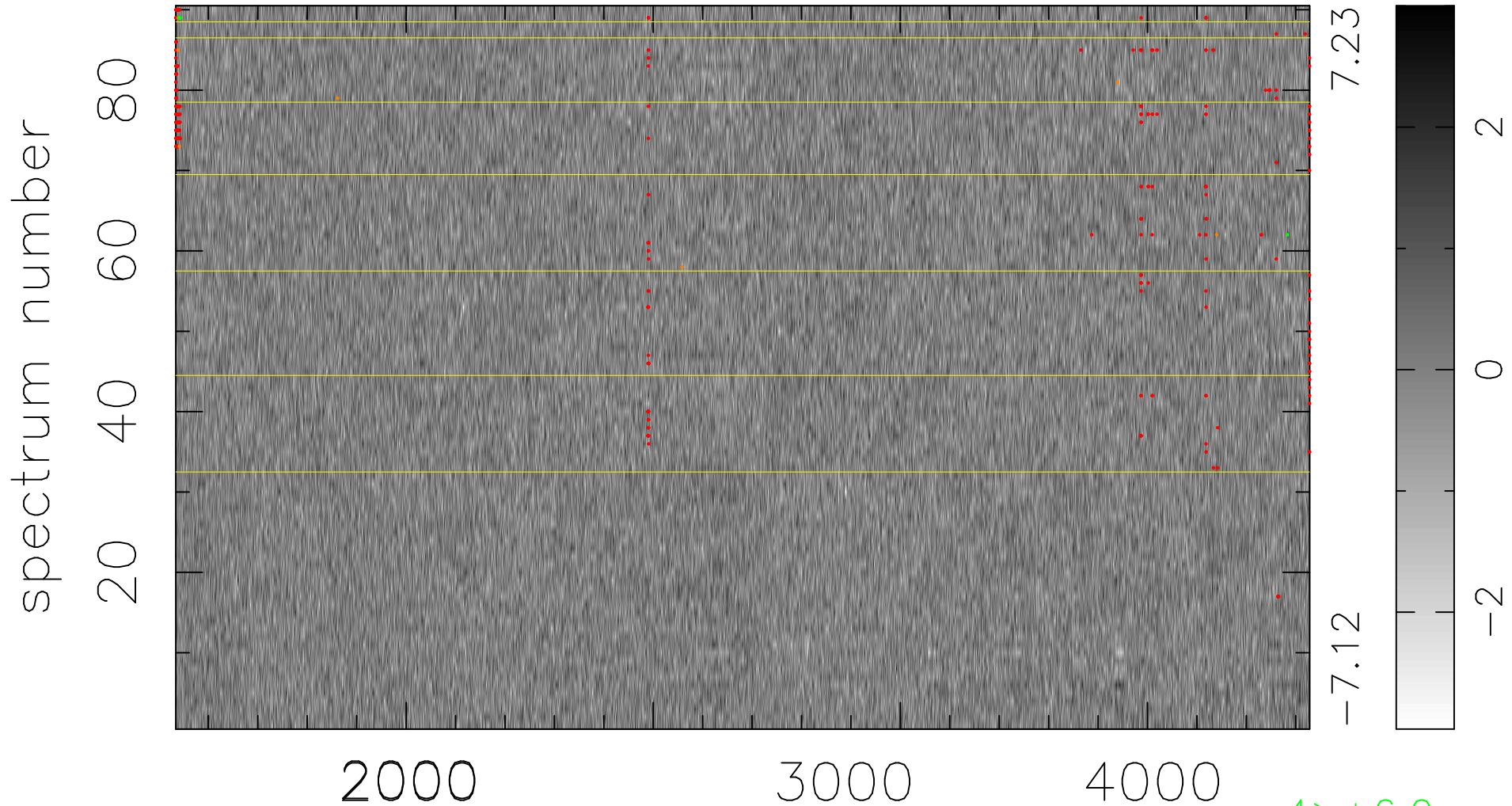


$$\chi(\lambda, t) = ( \text{Data} - \text{Model } \text{AC}_5\text{B}_3\text{F} ) / \sigma \chi$$

$$\chi^2 / (413010 - 5129) = 0.911 \Rightarrow 1.007$$

4589x90



7.23

-7.12

2

0

-2

4 > +6.0σ

8 < -6.0σ

bad:324=0.078% λ (Å) z = 1.23095