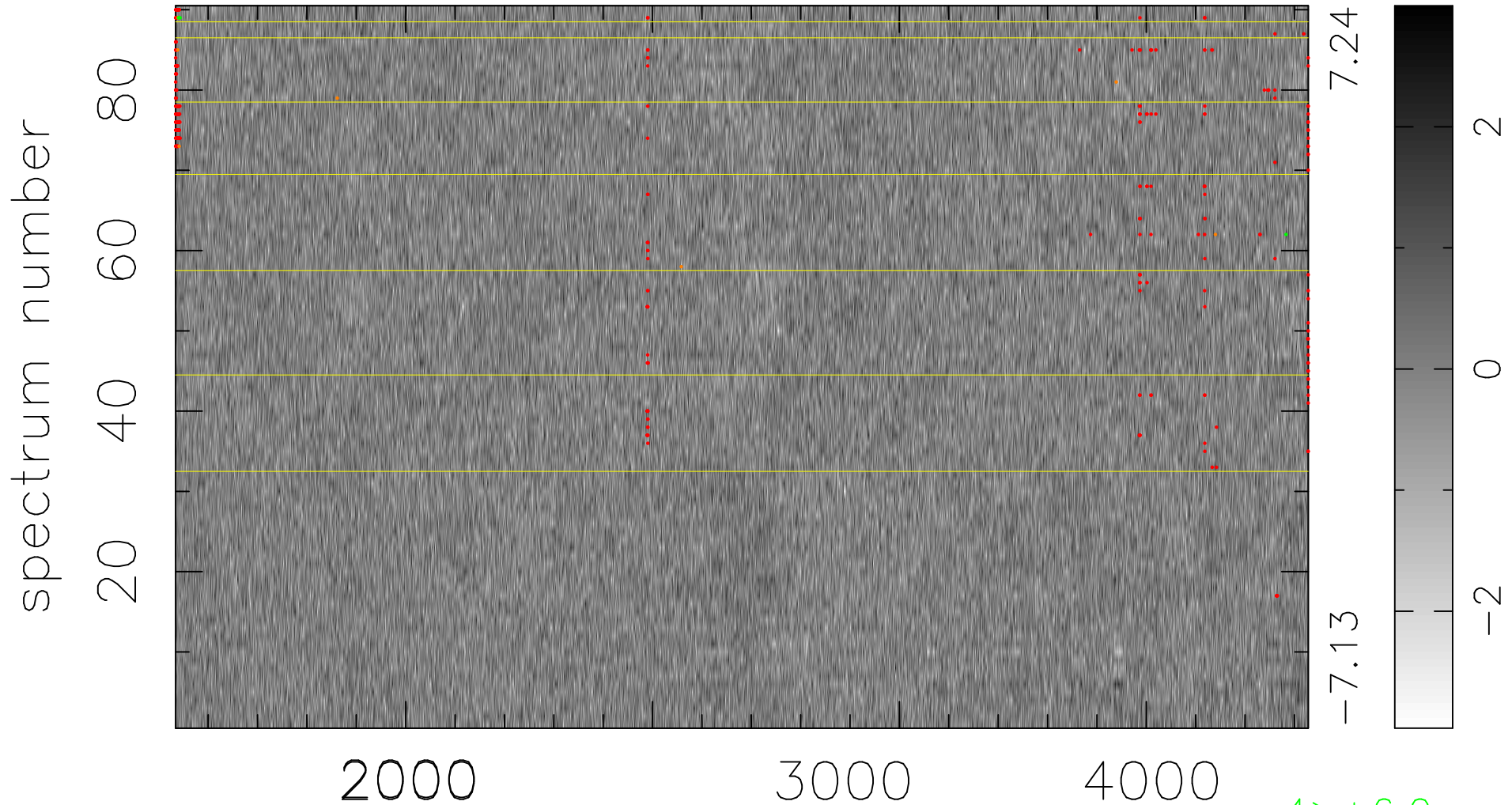


$$\chi(\lambda, t) = ( \text{Data} - \text{Model AC}_5\text{F} ) / \sigma \chi$$

$$\chi^2 / (413010 - 4965) = 0.913 \Rightarrow 1.007$$

4589x90



bad:324=0.078%  $\lambda$  (Å)  $z = 1.23095$

4 > +6.0 $\sigma$

8 < -6.0 $\sigma$