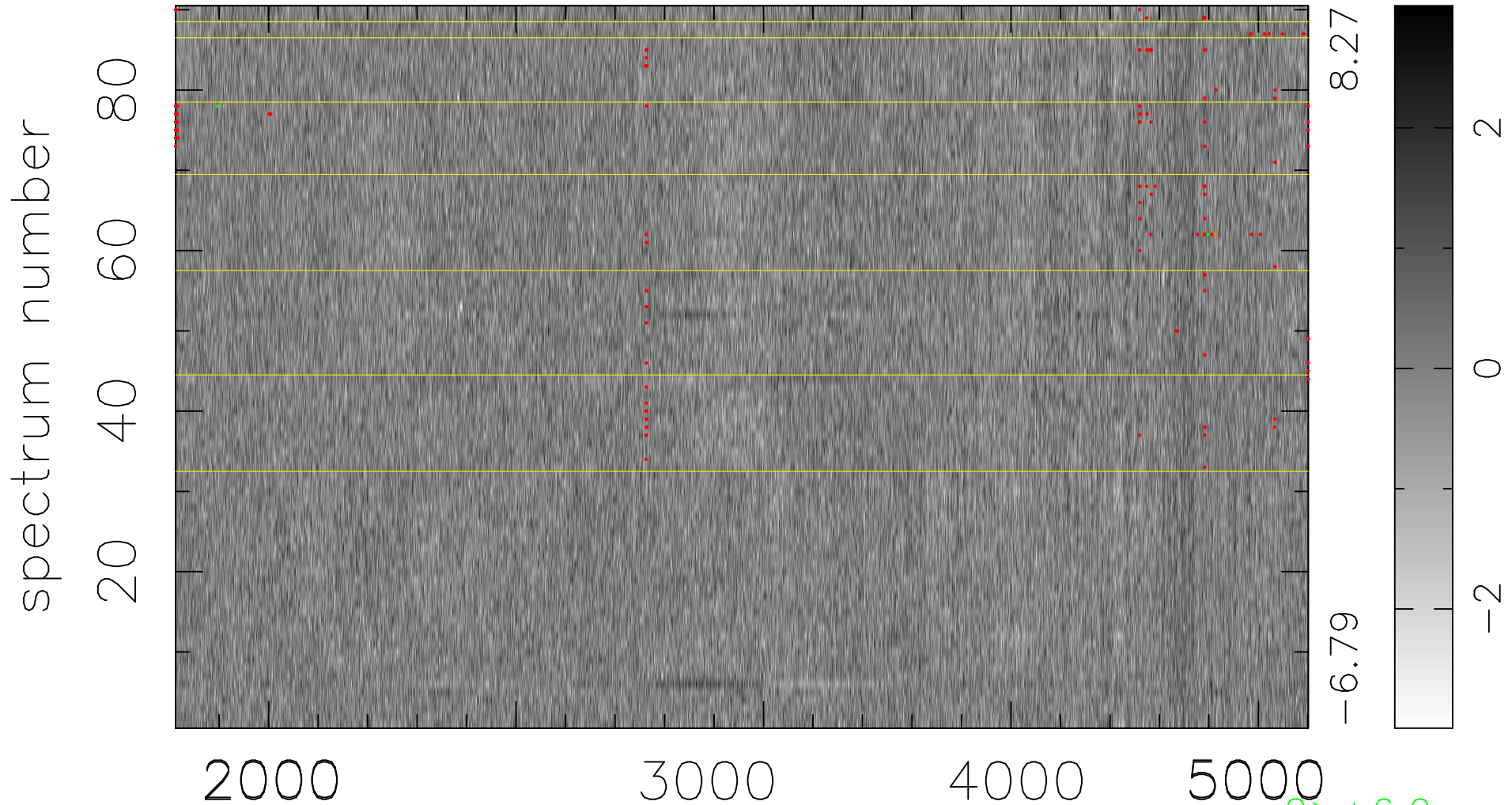


$$\chi(\lambda, t) = ( \text{Data} - \text{Model } \text{AC}_5\text{B}_4\text{F} ) / \sigma \chi$$

$$\chi^2 / (412020 - 5237) = 0.909 \Rightarrow 1.014$$

4578x90



bad:180=0.044%  $\lambda$  (Å)  $z = 0.96731$

2 > +6.0σ

1 < -6.0σ