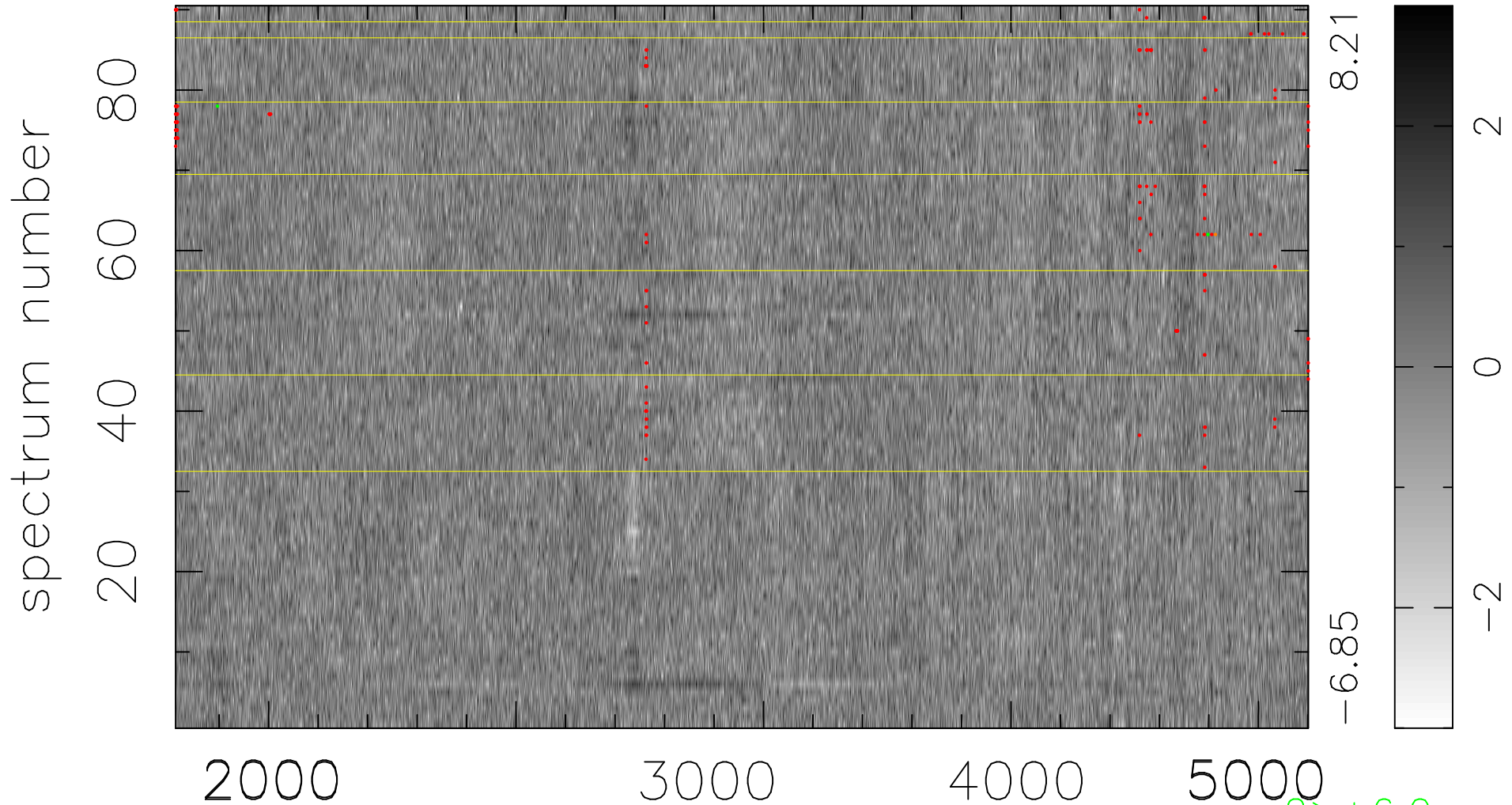


$$\chi(\lambda, t) = (\text{Data} - \text{Model AC}_5\text{F}) / \sigma \chi$$

$$\chi^2 / (412020 - 5059) = 0.914 \Rightarrow 1.012$$

4578x90



bad:180=0.044% λ (Å) $z = 0.96731$

2 > +6.0σ
1 < -6.0σ